

## delta 1 Catenin/p120 Catenin Rabbit mAb

Catalog No: #56003

Package Size: #56003-1 50ul #56003-2 100ul

Orders: [order@signalwayantibody.com](mailto:order@signalwayantibody.com)Support: [tech@signalwayantibody.com](mailto:tech@signalwayantibody.com)

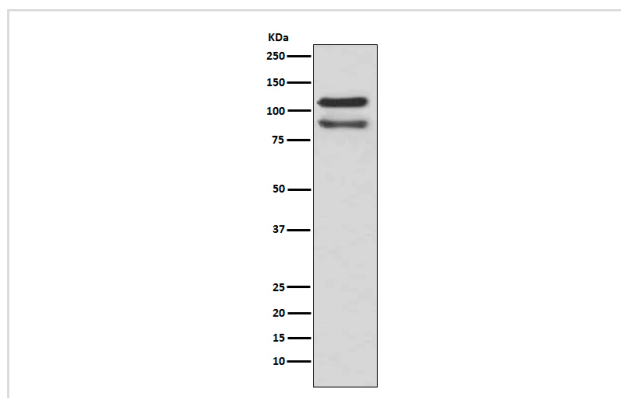
## Description

|                       |   |
|-----------------------|---|
| Product Name          | delta 1 Catenin/p120 Catenin Rabbit mAb   |
| Host Species          | Rabbit  |
| Clonality             | Monoclonal  |
| Isotype               | Rabbit IgG  |
| Purification          | Affinity-chromatography   |
| Applications          | WB IHC ICC/IF IP  |
| Species Reactivity    | Human Mouse Rat   |
| Specificity           | delta 1 Catenin/p120 Catenin Antibody detects endogenous levels of total delta 1 Catenin/p120 Catenin |
| Immunogen Description | A synthesized peptide derived from human delta 1 Catenin/p120 Catenin                                 |
| Other Names           | CAS; P120CAS; P120CTN; CTNND; p120  |
| Accession No.         | Uniprot:O60716  |
| Calculated MW         | 105kDa  |
| Formulation           | Rabbit IgG in phosphate buffered saline , pH 7.4, 150mM NaCl, 0.02% sodium azide and 50% glycerol.    |
| Storage               | Store at +4°C short term. Store at -20°C long term. Avoid freeze / thaw cycle.                        |

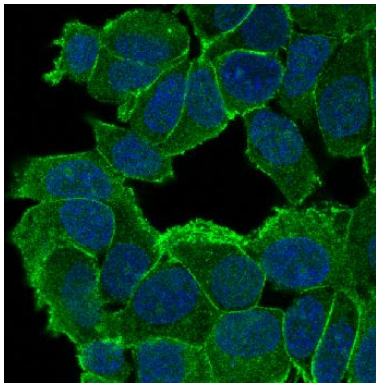
## Application Details

WB:1:500~1:2000IHC:1:50~1:100ICC/IF:1:50~1:100IP:1:30

## Images



Western blot analysis of delta1 Catenin expression in HeLa cell lysate.



Immunofluorescent analysis of MCF-7 cells, using delta 1 Catenin/p120 Catenin Antibody .

## Product Description

Catenin  $\delta$ -1 (p120 catenin) has an amino-terminal coiled-coil domain followed by a regulatory domain containing multiple phosphorylation sites and a central Armadillo repeat domain of ten linked 42-amino acid repeats. The carboxy-terminal tail has no known function. Catenin  $\delta$ -1 fulfills critical roles in the regulation of cell-cell adhesion as it regulates E-cadherin turnover at the cell surface to determine the level of E-cadherin available for cell-cell adhesion.

Note: This product is for in vitro research use only and is not intended for use in humans or animals.