

## SETD7 Rabbit mAb

Catalog No: #56009

Package Size: #56009-1 50ul #56009-2 100ul

Orders: order@signalwayantibody.com

Support: tech@signalwayantibody.com

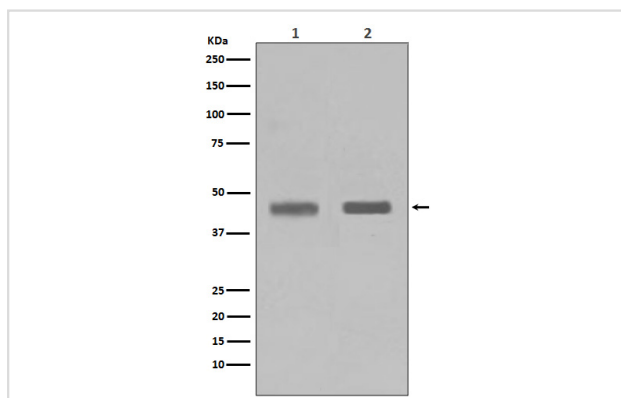
## Description

|                       |                                                                                                                  |
|-----------------------|------------------------------------------------------------------------------------------------------------------|
| Product Name          | SETD7 Rabbit mAb                                                                                                 |
| Host Species          | Rabbit                                                                                                           |
| Clonality             | Monoclonal                                                                                                       |
| Isotype               | Rabbit IgG                                                                                                       |
| Purification          | Affinity-chromatography                                                                                          |
| Applications          | WB IP                                                                                                            |
| Species Reactivity    | Human Mouse Rat                                                                                                  |
| Specificity           | SETD7 Antibody detects endogenous levels of total SETD7                                                          |
| Immunogen Description | A synthesized peptide derived from human SETD7                                                                   |
| Other Names           | Histone H3-K4 methyltransferase SETD7; Lysine N-methyltransferase 7; SET domain-containing protein 7; SET7;SET9; |
| Accession No.         | Uniprot:Q8WTS6                                                                                                   |
| Calculated MW         | 41kDa                                                                                                            |
| Formulation           | Rabbit IgG in phosphate buffered saline , pH 7.4, 150mM NaCl, 0.02% sodium azide and 50% glycerol.               |
| Storage               | Store at +4°C short term. Store at -20°C long term. Avoid freeze / thaw cycle.                                   |

## Application Details

WB:1:500~1:2000IP:1:50

## Images



Western blot analysis of SETD7 in (1) Jurkat cell lysate; (2) HeLa cell lysate.

## Product Description

Histone methyltransferase that specifically monomethylates 'Lys-4' of histone H3. H3 'Lys-4' methylation represents a specific tag for epigenetic transcriptional activation. Plays a central role in the transcriptional activation of genes such as collagenase or insulin. Recruited by IPF1/PDX-1 to the insulin promoter, leading to activate transcription.

---

Note: This product is for in vitro research use only and is not intended for use in humans or animals.