

ENO1 Rabbit mAb

Catalog No: #56015

Package Size: #56015-1 50ul #56015-2 100ul

Orders: order@signalwayantibody.com

Support: tech@signalwayantibody.com

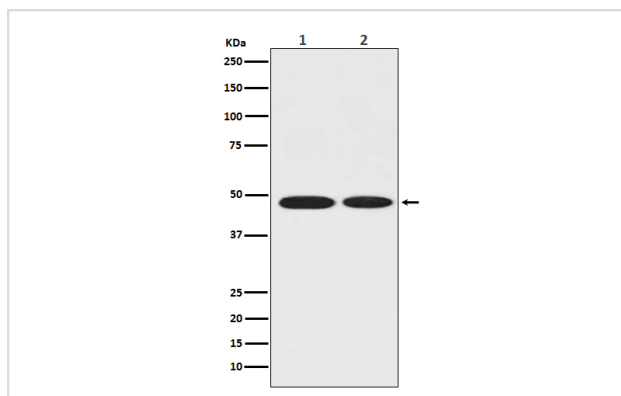
Description

Product Name	ENO1 Rabbit mAb
Host Species	Rabbit
Clonality	Monoclonal
Isotype	Rabbit IgG
Purification	Affinity-chromatography
Applications	WB ICC/IF IP
Species Reactivity	Human Mouse Rat
Specificity	ENO1 Antibody detects endogenous levels of total ENO1
Immunogen Description	A synthesized peptide derived from human ENO1
Other Names	ENO1;ENO1L1;MBP-1;MPB1;NNE;PPH;
Accession No.	Uniprot:P06733
Calculated MW	47kDa
Formulation	Rabbit IgG in phosphate buffered saline , pH 7.4, 150mM NaCl, 0.02% sodium azide and 50% glycerol.
Storage	Store at +4°C short term. Store at -20°C long term. Avoid freeze / thaw cycle.

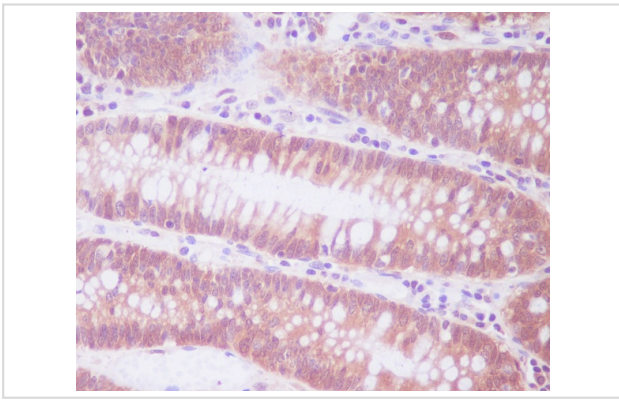
Application Details

WB:1:500~1:2000IC/IF:1:50~1:200IP:1:50

Images



Western blot analysis of ENO1 in (1)MCF-7 whole cell lysate;
(2)Rat brain tissue lysate.



Immunohistochemical analysis of paraffin-embedded human colon, using ENO1 Antibody.

Product Description

Enolase is an important glycolytic enzyme involved in the interconversion of 2-phosphoglycerate to phosphoenolpyruvate. Mammalian enolase exists as three subunits: enolase-1 (α -enolase), enolase-2 (γ -enolase) and enolase-3 (β -enolase) that can form both homo- and heterodimers. Expression of the enolase isoforms differs in a tissue specific manner.

Note: This product is for in vitro research use only and is not intended for use in humans or animals.