

Collagen I Rabbit mAb

Catalog No: #56017



Package Size: #56017-1 50ul #56017-2 100ul

Orders: order@signalwayantibody.comSupport: tech@signalwayantibody.com

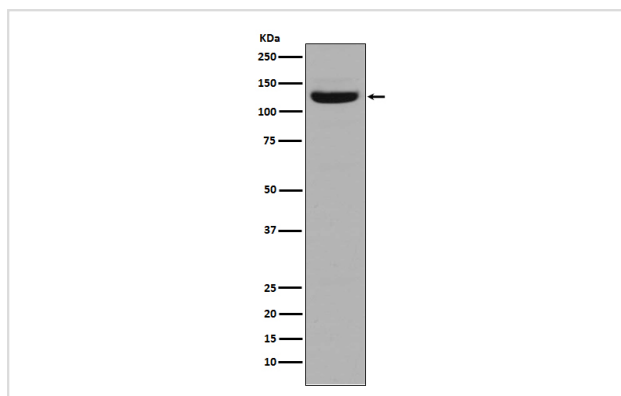
Description

Product Name	Collagen I Rabbit mAb
Host Species	Rabbit
Clonality	Monoclonal
Isotype	Rabbit IgG
Purification	Affinity-chromatography
Applications	WB IHC
Species Reactivity	Human Cow
Specificity	Collagen I Antibody detects endogenous levels of total Collagen I
Immunogen Description	A synthesized peptide derived from human Collagen I
Other Names	Collagen alpha-1(I) chain, Alpha-1 type I collagen, COL1A1;
Accession No.	Uniprot:P02452/P08123
Calculated MW	139kDa
Formulation	Rabbit IgG in phosphate buffered saline , pH 7.4, 150mM NaCl, 0.02% sodium azide and 50% glycerol.
Storage	Store at +4°C short term. Store at -20°C long term. Avoid freeze / thaw cycle.

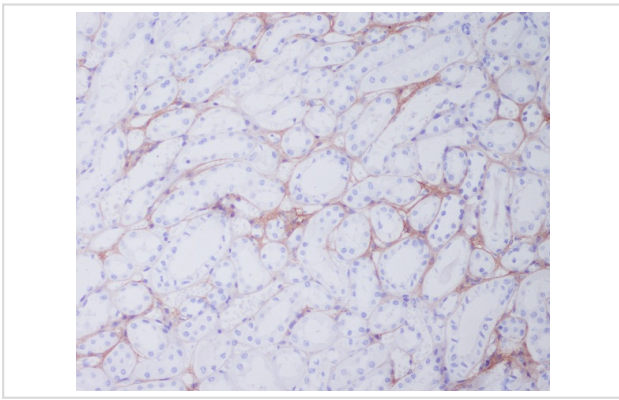
Application Details

WB:1:500~1:2000IHC:1:50~1:200

Images



Western blot analysis of Collagen I in Human stomach tissue lysate.



Immunohistochemical analysis of paraffin-embedded human kidney, using Collagen I Antibody.

Product Description

This gene encodes one of the chains for type I collagen, the fibrillar collagen found in most connective tissues. Mutations in this gene are associated with osteogenesis imperfecta, Ehlers-Danlos syndrome, idiopathic osteoporosis, and atypical Marfan syndrome.

Note: This product is for in vitro research use only and is not intended for use in humans or animals.