

## PMEL17 / GP100 Rabbit mAb

Catalog No: #56021

Package Size: #56021-1 50ul #56021-2 100ul

Orders: [order@signalwayantibody.com](mailto:order@signalwayantibody.com)Support: [tech@signalwayantibody.com](mailto:tech@signalwayantibody.com)

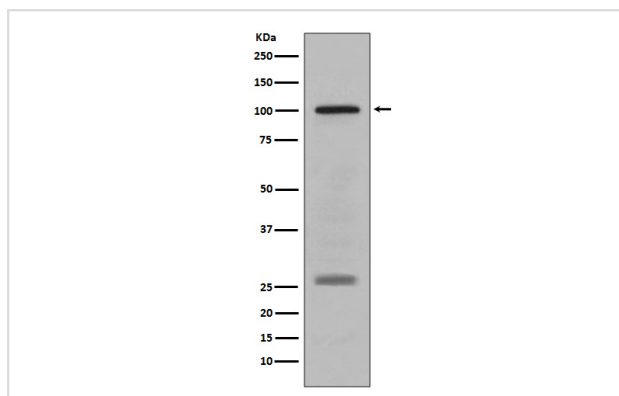
## Description

Product Name	PMEL17 / GP100 Rabbit mAb
Host Species	Rabbit
Clonality	Monoclonal
Isotype	Rabbit IgG
Purification	Affinity-chromatography
Applications	WB IHC
Species Reactivity	Human
Specificity	PMEL17 / GP100 Antibody detects endogenous levels of total PMEL17 / GP100
Immunogen Description	A synthesized peptide derived from human PMEL17 / GP100
Other Names	PMEL; ME20-M; Premelanosome protein; Silver locus protein homolog; PMEL17; SILV;
Accession No.	Uniprot:P40967
Calculated MW	100kDa
Formulation	Rabbit IgG in phosphate buffered saline , pH 7.4, 150mM NaCl, 0.02% sodium azide and 50% glycerol.
Storage	Store at +4°C short term. Store at -20°C long term. Avoid freeze / thaw cycle.

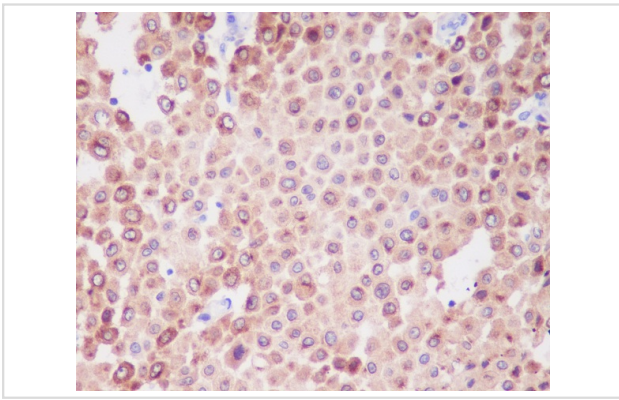
## Application Details

WB:1:500~1:2000IHC:1:50~1:200

## Images



Western blot analysis of PMEL17 / GP100 expression in human melanoma lysate.



Immunohistochemical analysis of paraffin-embedded human melanoma, using PMEL17 / GP100 Antibody.

## Product Description

Plays a central role in the biogenesis of melanosomes. Involved in the maturation of melanosomes from stage I to II. The transition from stage I melanosomes to stage II melanosomes involves an elongation of the vesicle, and the appearance within of distinct fibrillar structures. Release of the soluble form, ME20-S, could protect tumor cells from antibody mediated immunity.

Note: This product is for in vitro research use only and is not intended for use in humans or animals.