

IAP2 Rabbit mAb

Catalog No: #56025



Package Size: #56025-1 50ul #56025-2 100ul

Orders: order@signalwayantibody.comSupport: tech@signalwayantibody.com

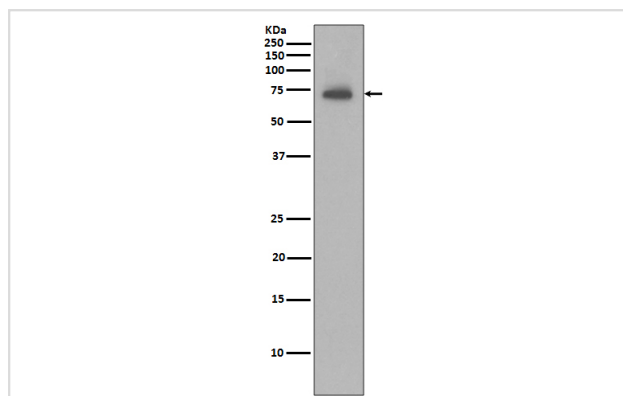
Description

Product Name	IAP2 Rabbit mAb
Host Species	Rabbit
Clonality	Monoclonal
Isotype	Rabbit IgG
Purification	Affinity-chromatography
Applications	WB IHC ICC/IF IP
Species Reactivity	Human
Specificity	IAP2 Antibody detects endogenous levels of total IAP2
Immunogen Description	A synthesized peptide derived from human IAP2
Other Names	AIP1; API2; BIRC3; CIAP2; HAIP1; IAP homolog C ;RNF49; MIHC; MALT2; Apoptosis inhibitor 2;IAP2;
Accession No.	Uniprot:Q13489
Calculated MW	72kDa
Formulation	Rabbit IgG in phosphate buffered saline , pH 7.4, 150mM NaCl, 0.02% sodium azide and 50% glycerol.
Storage	Store at +4°C short term. Store at -20°C long term. Avoid freeze / thaw cycle.

Application Details

WB:1:1000~1:2000IHC:1:50~1:100ICC/IF:1:50~1:100IP:1:50

Images



Western blot analysis of IAP2 expression in Ramos cell lysate.

Product Description

Apoptotic suppressor. The BIR motifs region interacts with TNF receptor associated factors 1 and 2 (TRAF1 and TRAF2) to form an heteromeric complex, which is then recruited to the tumor necrosis factor receptor 2 (TNFR2).

Note: This product is for in vitro research use only and is not intended for use in humans or animals.