

C9 Rabbit mAb

Catalog No: #56026

Package Size: #56026-1 50ul #56026-2 100ul

Orders: order@signalwayantibody.comSupport: tech@signalwayantibody.com

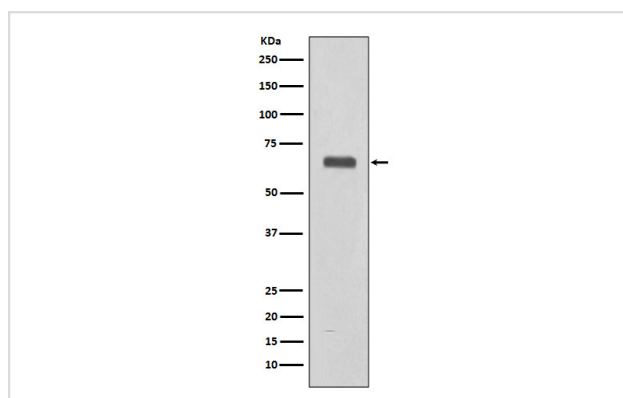
Description

Product Name	C9 Rabbit mAb
Host Species	Rabbit
Clonality	Monoclonal
Isotype	Rabbit IgG
Purification	Affinity-chromatography
Applications	WB IHC IP
Species Reactivity	Human
Specificity	C9 Antibody detects endogenous levels of total C9
Immunogen Description	A synthesized peptide derived from human C9
Other Names	Complement component C9; Complement component C9b; Complement component C9a;
Accession No.	Uniprot:P02748
Calculated MW	70kDa
Formulation	Rabbit IgG in phosphate buffered saline , pH 7.4, 150mM NaCl, 0.02% sodium azide and 50% glycerol.
Storage	Store at +4°C short term. Store at -20°C long term. Avoid freeze / thaw cycle.

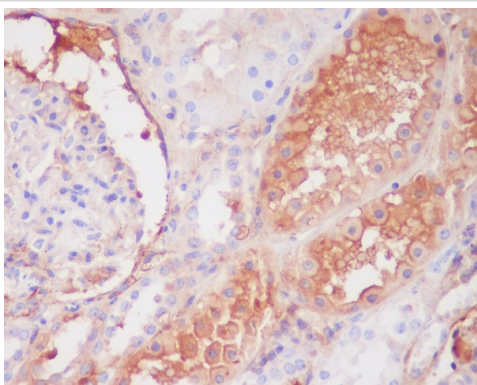
Application Details

WB:1:500~1:2000 IHC:1:50~1:200 IP:1:50

Images



Western blot analysis of C9 expression in Human fetal liver lysate.



Immunohistochemical analysis of paraffin-embedded human kidney, using C9 Antibody.

Product Description

C9 is synthesised in the liver and monocytes, and is a plasma protein consisting of a single polypeptide chain of molecular weight 71kDa. Normal plasma concentration is 60mg/L. C9 forms part of the membrane attack complex (MAC) the cytolytic terminal complex of the complement pathways. C9 binds to the membrane associated C5b-8, binding of C9 to C5b-8 leads to the circular polymerisation of 12-18 C9 molecules. This is the basis of the hydrophilic, protein-walled, trans-membrane channel formed by the MAC, which leads to cell lysis and destruction.

Note: This product is for in vitro research use only and is not intended for use in humans or animals.