

## Torsin A Rabbit mAb

Catalog No: #56028

Package Size: #56028-1 50ul #56028-2 100ul

Orders: order@signalwayantibody.com

Support: tech@signalwayantibody.com

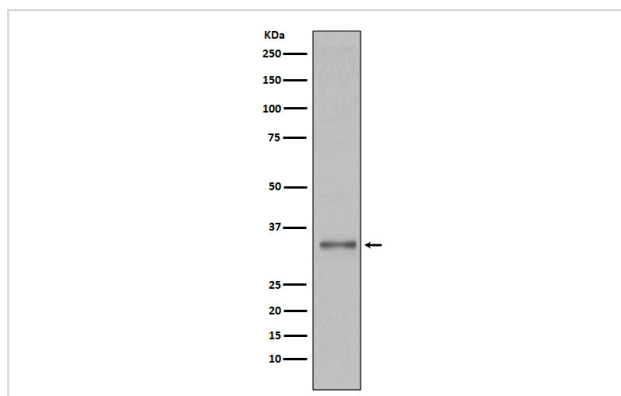
## Description

Product Name	Torsin A Rabbit mAb
Host Species	Rabbit
Clonality	Monoclonal
Isotype	Rabbit IgG
Purification	Affinity-chromatography
Applications	WB FC
Species Reactivity	Human
Specificity	Torsin A Antibody detects endogenous levels of total Torsin A
Immunogen Description	A synthesized peptide derived from human Torsin A
Other Names	TOR1A;DQ2; DYT1; TorsinA;
Accession No.	Uniprot:O14656
Calculated MW	35kDa
Formulation	Rabbit IgG in phosphate buffered saline , pH 7.4, 150mM NaCl, 0.02% sodium azide and 50% glycerol.
Storage	Store at +4°C short term. Store at -20°C long term. Avoid freeze / thaw cycle.

## Application Details

WB:1:500~1:2000FC:1:50

## Images



Western blot analysis of Torsin A expression in 293T cell lysate.

## Product Description

The neurological condition Dystonia is associated with sustained muscle contractions and abnormal posturing. TorsinA, torsinB, torp2A and torp3A belong to the family of ATPases associated with cellular activities (AAA+) and mutations in torsinA cause early onset dystonia. TorsinA has been shown to suppress intracellular protein aggregation in *C. elegans* and possesses chaperon activity. Interestingly, torsinA is highly expressed in dopaminergic neurons and associates with alpha-synuclein in Lewy bodies, which pathologically characterize Parkinson's Disease.

---

Note: This product is for in vitro research use only and is not intended for use in humans or animals.