

## BMP4 Rabbit mAb

Catalog No: #56030



Package Size: #56030-1 50ul #56030-2 100ul

Orders: [order@signalwayantibody.com](mailto:order@signalwayantibody.com)Support: [tech@signalwayantibody.com](mailto:tech@signalwayantibody.com)

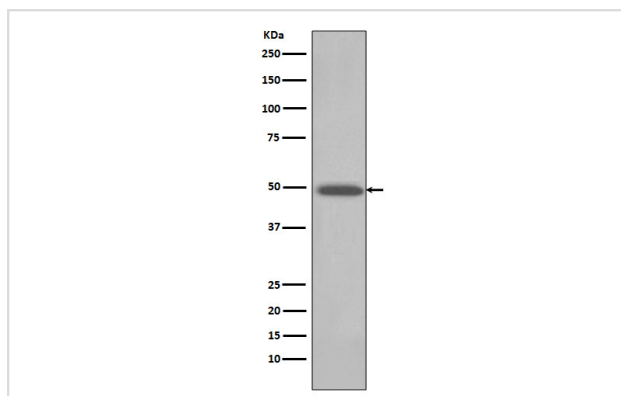
## Description

Product Name	BMP4 Rabbit mAb
Host Species	Rabbit
Clonality	Monoclonal
Isotype	Rabbit IgG
Purification	Affinity-chromatography
Applications	WB IHC ICC/IF IP FC
Species Reactivity	Human
Specificity	BMP4 Antibody detects endogenous levels of total BMP4
Immunogen Description	A synthesized peptide derived from human BMP4
Other Names	BMP-2B; BMP-4; BMP2B; BMP2B1; bone morphogenetic protein 4; DVR4; ZYME
Accession No.	Uniprot:P12644
Calculated MW	47kDa
Formulation	Rabbit IgG in phosphate buffered saline , pH 7.4, 150mM NaCl, 0.02% sodium azide and 50% glycerol.
Storage	Store at +4°C short term. Store at -20°C long term. Avoid freeze / thaw cycle.

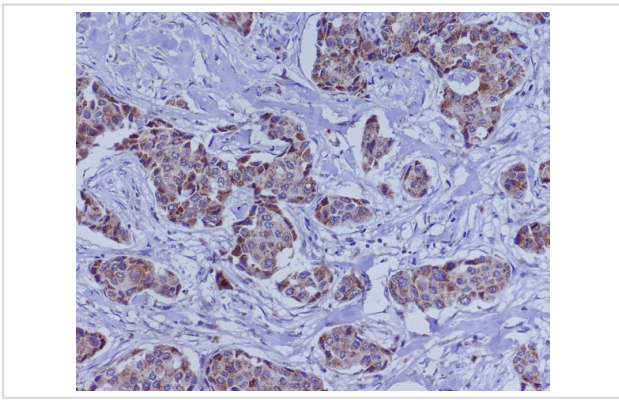
## Application Details

WB:1:500~1:2000IHC:1:50~1:200ICC/IF:1:50~1:200IP:1:50FC:1:50

## Images



Western blot analysis of BMP4 expression in HeLa cell lysate.



Immunohistochemical analysis of paraffin-embedded human breast cancer, using BMP4 Antibody.

## Product Description

Bone morphogenetic proteins (BMPs) were first identified as molecules that can induce ectopic bone and cartilage formation. BMPs belongs to the TGF- $\beta$  superfamily, playing many diverse functions during development. BMPs are synthesized as precursor proteins and then processed by cleavage to release the c-terminal mature BMP. BMPs initiate signaling by binding to a receptor complex containing type I and type II serine/threonine receptor kinases that then phosphorylate Smad (mainly Smad1, 5 and 8), resulting the translocation of Smad into the nucleus. BMP was also reported to activate MAPK pathways in some systems.

Note: This product is for in vitro research use only and is not intended for use in humans or animals.