

ErbB2 (HER2) Rabbit mAb

Catalog No: #56035



Package Size: #56035-1 50ul #56035-2 100ul

Orders: order@signalwayantibody.comSupport: tech@signalwayantibody.com

Description

Product Name	ErbB2 (HER2) Rabbit mAb
Host Species	Rabbit
Clonality	Monoclonal
Isotype	Rabbit IgG
Purification	Affinity-chromatography
Applications	WB IHC ICC/IF IP FC
Species Reactivity	Human
Specificity	ErbB2 (HER2) Antibody detects endogenous levels of total ErbB (HER2)
Immunogen Description	A synthesized peptide derived from human ErbB2 (HER2)
Other Names	C-erbB-2; ErbB2; HER2, MLN 19; NEU; NEU proto-oncogene; NGL; Receptor protein-tyrosine kinase erbB-2;
Accession No.	Uniprot:P04626
Calculated MW	185kDa
Formulation	Rabbit IgG in phosphate buffered saline , pH 7.4, 150mM NaCl, 0.02% sodium azide and 50% glycerol.
Storage	Store at +4°C short term. Store at -20°C long term. Avoid freeze / thaw cycle.

Application Details

WB:1:500~1:2000

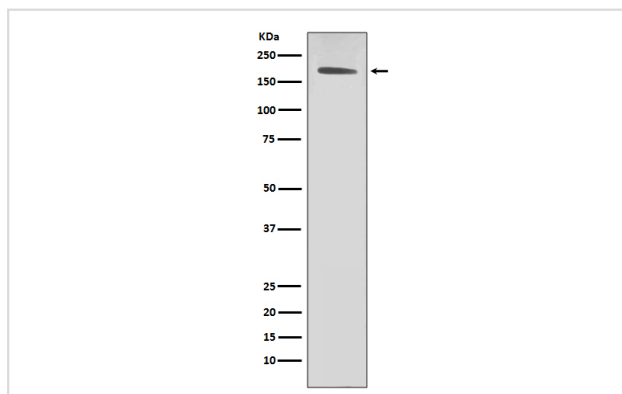
IHC:1:50~1:200

ICC/IF:1:50~1:200

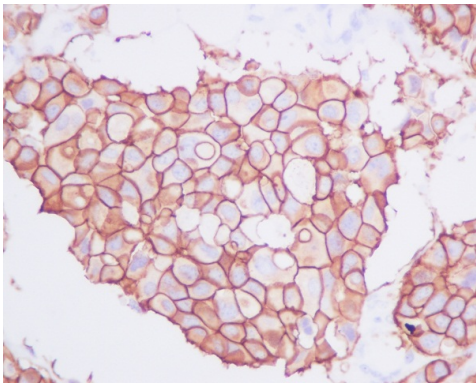
IP:1:50

FC:1:50

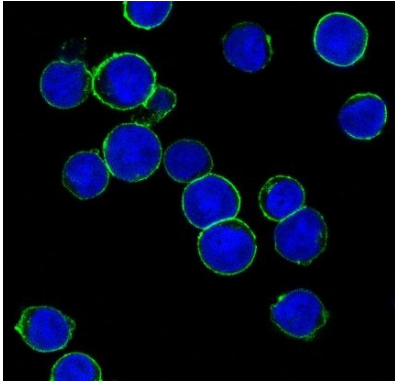
Images



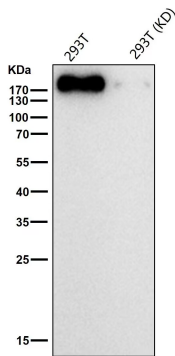
Western blot analysis of ErbB2 (HER2) expression in SKBR-3 cell lysate.



Immunohistochemical analysis of paraffin-embedded human breast carcinoma, using ErbB2 (HER2) Antibody.



Immunofluorescent analysis of SKBR cells, using ErbB2 (HER2) Antibody.



Western blotting analysis using ErbB2 (HER2) Rabbit mAb

Product Description

This gene encodes a member of the epidermal growth factor (EGF) receptor family of receptor tyrosine kinases. This protein has no ligand binding domain of its own and therefore cannot bind growth factors. However, it does bind tightly to other ligand-bound EGF receptor family members to form a heterodimer, stabilizing ligand binding and enhancing kinase-mediated activation of downstream signalling pathways, such as those involving mitogen-activated protein kinase and phosphatidylinositol-3 kinase.

Note: This product is for in vitro research use only and is not intended for use in humans or animals.