

## HSPA12A Rabbit mAb

Catalog No: #56036



Package Size: #56036-1 50ul #56036-2 100ul

Orders: order@signalwayantibody.com

Support: tech@signalwayantibody.com

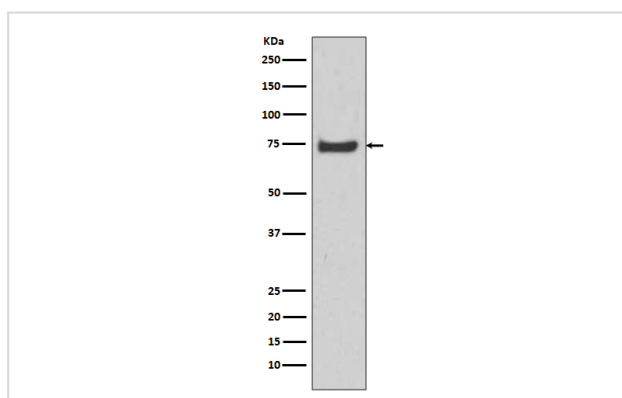
## Description

|                       |   |
|-----------------------|---|
| Product Name          | HSPA12A Rabbit mAb  |
| Host Species          | Rabbit  |
| Clonality             | Monoclonal  |
| Isotype               | Rabbit IgG  |
| Purification          | Affinity-chromatography   |
| Applications          | WB IHC ICC/IF IP  |
| Species Reactivity    | Human Mouse Rat   |
| Specificity           | HSPA12A Antibody detects endogenous levels of total HSPA12A   |
| Immunogen Description | A synthesized peptide derived from human HSPA12A  |
| Other Names           | FLJ13874 antibody;Heat shock 70 kDa protein 12A antibody;heat shock 70kD protein 12A antibody;heat shock 70kDa protein 12A antibody;HS12A_HUMAN antibody;Hspa12a antibody;KIAA0417 antibody |
| Accession No.         | Uniprot:O43301  |
| Calculated MW         | 75kDa   |
| Formulation           | Rabbit IgG in phosphate buffered saline , pH 7.4, 150mM NaCl, 0.02% sodium azide and 50% glycerol.  |
| Storage               | Store at +4°C short term. Store at -20°C long term. Avoid freeze / thaw cycle.  |

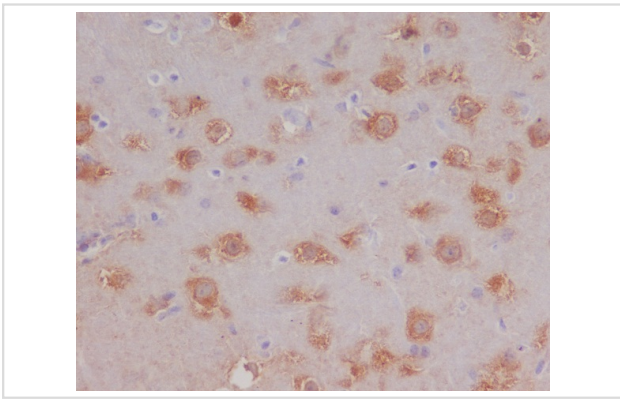
## Application Details

WB:1:500~1:2000IHC:1:50~1:200ICC/IF:1:50~1:200IP:1:50~1:100

## Images



Western blot analysis of HSPA12A expression in U-87 MG cell lysate.



Immunohistochemical analysis of paraffin-embedded mouse brain, using HSPA12A Antibody.

## Product Description

---

HSPA12A is an ATP binding protein.

---

Note: This product is for in vitro research use only and is not intended for use in humans or animals.