

GTPase HRAS Rabbit mAb

Catalog No: #56037

Package Size: #56037-1 50ul #56037-2 100ul

Orders: order@signalwayantibody.com

Support: tech@signalwayantibody.com

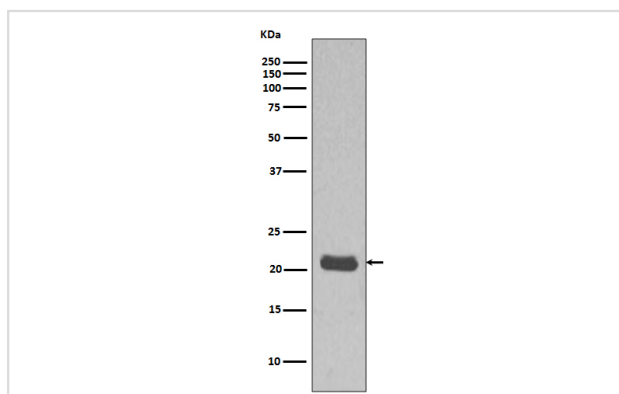
Description

Product Name	GTPase HRAS Rabbit mAb
Host Species	Rabbit
Clonality	Monoclonal
Isotype	Rabbit IgG
Purification	Affinity-chromatography
Applications	WB ICC/IF IP FC
Species Reactivity	Human Mouse Rat
Specificity	GTPase HRAS Antibody detects endogenous levels of total GTPase HRAS
Immunogen Description	A synthesized peptide derived from human GTPase HRAS
Other Names	GTPase HRas; H-Ras-1; Ha-Ras; Transforming protein p21; c-H-ras; p21ras; HRAS; HRAS1; GTPase NRas; Transforming protein N-Ras; NRAS; HRAS1; GTPase KRas; K-Ras 2; Ki-Ras; c-K-ras; c-Ki-ras; GTPase KRas; KRAS; KRAS2, RASK2
Accession No.	Uniprot:P01112
Calculated MW	21kDa
Formulation	Rabbit IgG in phosphate buffered saline , pH 7.4, 150mM NaCl, 0.02% sodium azide and 50% glycerol.
Storage	Store at +4°C short term. Store at -20°C long term. Avoid freeze / thaw cycle.

Application Details

WB:1:500~1:2000 ICC/IF:1:50~1:200 IP:1:50 FC:1:30

Images



Western blot analysis MCF7 cell lysate using HRAS Antibody.

Product Description

The KRAS gene encodes the human cellular homolog of a transforming gene isolated from the Kirsten rat sarcoma virus. The RAS proteins are GDP/GTP-binding proteins that act as intracellular signal transducers. The most well-studied members of the RAS (derived from 'Rat Sarcoma' virus) gene family include KRAS, HRAS, and NRAS. These genes encode immunologically related proteins with a molecular mass of 21 kD and are

homologs of rodent sarcoma virus genes that have transforming abilities.

Note: This product is for in vitro research use only and is not intended for use in humans or animals.