

RAIDD Rabbit mAb

Catalog No: #56047

Package Size: #56047-1 50ul #56047-2 100ul

Orders: order@signalwayantibody.comSupport: tech@signalwayantibody.com

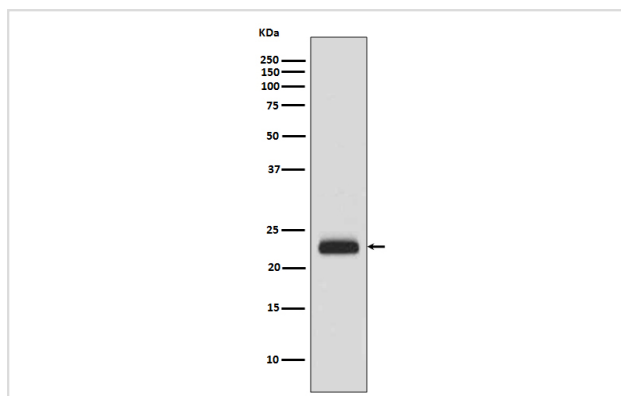
Description

Product Name	RAIDD Rabbit mAb
Host Species	Rabbit
Clonality	Monoclonal
Isotype	Rabbit IgG
Purification	Affinity-chromatography
Applications	WB IHC ICC/IF IP FC
Species Reactivity	Human
Specificity	RAIDD Antibody detects endogenous levels of total RAIDD
Immunogen Description	A synthesized peptide derived from human RAIDD
Other Names	CRADD;MGC9163;RAIDD;Death adaptor molecule RAIDD;Death domain containing protein CRADD;
Accession No.	Uniprot:P78560
Calculated MW	23kDa
Formulation	Rabbit IgG in phosphate buffered saline , pH 7.4, 150mM NaCl, 0.02% sodium azide and 50% glycerol.
Storage	Store at +4°C short term. Store at -20°C long term. Avoid freeze / thaw cycle.

Application Details

WB:1:500~1:2000IHC:1:50~1:200ICC/IF:1:50~1:200IP:1:50FC:1:50

Images



Western blot analysis of RAIDD expression in HeLa cell lysate.

Product Description

The receptor interacting protein RIP is a death domain-containing serine/threonine kinase which associates with FAS or the TNF-R1 binding protein TRADD. RAIDD (RIP-associated ICH-1/Ced-3 homologous protein with a death domain) has been identified as a RIP binding protein that also associates with members of the caspase family, providing a link between activation of the TNF-Rs and the triggering of the cysteine protease cascade. The amino-terminal domain of RAIDD shares significant homology with the prodomain of ICH-1 and mediates the binding of RAIDD to this cysteine protease.

Note: This product is for in vitro research use only and is not intended for use in humans or animals.