

CD22 Rabbit mAb

Catalog No: #56051

Package Size: #56051-1 50ul #56051-2 100ul

Orders: order@signalwayantibody.comSupport: tech@signalwayantibody.com

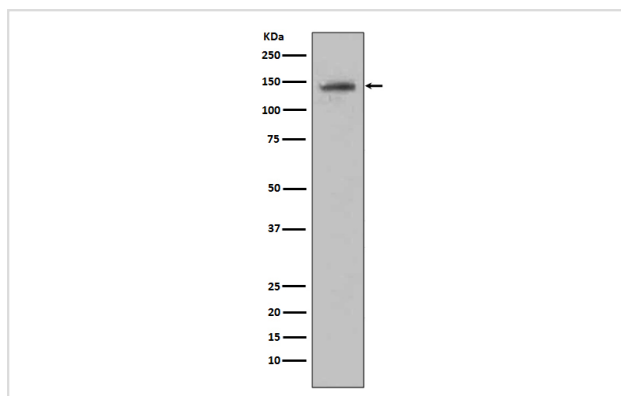
Description

Product Name	CD22 Rabbit mAb
Host Species	Rabbit
Clonality	Monoclonal
Isotype	Rabbit IgG
Purification	Affinity-chromatography
Applications	WB
Species Reactivity	Human Mouse Rat
Specificity	CD22 Antibody detects endogenous levels of total CD22
Immunogen Description	A synthesized peptide derived from human CD22
Other Names	CD22; BLCAM ; Leu14; Lyb8; SIGLEC2 ; B cell receptor CD22 precursor; MGC130020;
Accession No.	Uniprot:P20273
Calculated MW	150kDa
Formulation	Rabbit IgG in phosphate buffered saline , pH 7.4, 150mM NaCl, 0.02% sodium azide and 50% glycerol.
Storage	Store at +4°C short term. Store at -20°C long term. Avoid freeze / thaw cycle.

Application Details

WB: 1:500~1:2000

Images



Western blot analysis of Raji cell lysate using CD22 antibody.

Product Description

Acts as a regulator of B cell signaling. CD22 is expressed as both a cytoplasmic and membrane protein during discrete stages of B cell lymphocyte differentiation. The cytoplasmic form of CD22, expressed early in B cell development, is a useful marker for acute lymphocytic leukemia. The membrane form of CD22 is expressed in mature B cells prior to their differentiation into plasma cells. Alternative splicing results in two different isoforms, CD22 α and CD22 β .

Note: This product is for in vitro research use only and is not intended for use in humans or animals.