

## Rad21 Rabbit mAb

Catalog No: #56053

Package Size: #56053-1 50ul #56053-2 100ul

Orders: [order@signalwayantibody.com](mailto:order@signalwayantibody.com)Support: [tech@signalwayantibody.com](mailto:tech@signalwayantibody.com)

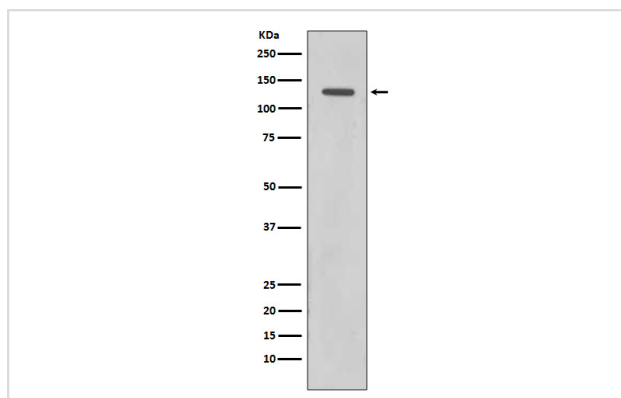
## Description

Product Name	Rad21 Rabbit mAb
Host Species	Rabbit
Clonality	Monoclonal
Isotype	Rabbit IgG
Purification	Affinity-chromatography
Applications	WB FC
Species Reactivity	Human Mouse Rat
Specificity	Rad21 Antibody detects endogenous levels of total Rad21
Immunogen Description	A synthesized peptide derived from human Rad21
Other Names	hHR21; Nuclear matrix protein 1; NXP-1; SCC1 homolog; HR21; KIAA0078; NXP1; Rad21;
Accession No.	Uniprot:O60216
Calculated MW	72,128kDa
Formulation	Rabbit IgG in phosphate buffered saline , pH 7.4, 150mM NaCl, 0.02% sodium azide and 50% glycerol.
Storage	Store at +4°C short term. Store at -20°C long term. Avoid freeze / thaw cycle.

## Application Details

WB:1:500~1:1000FC:1:50

## Images



Western blot analysis of Rad21 expression in HeLa cell lysate.

## Product Description

Rad21 is one of the major cohesin subunits that holds sister chromatids together until anaphase, when proteolytic cleavage by separase, a caspase-like enzyme, allows chromosomal separation. Rad21 interacts with Rec8 to form a cohesin complex that functions in sister chromatid alignment. Rad21 is also involved in the repair of double-strand breaks in DNA and is essential for mitotic growth. Rad21 undergoes a C-terminal cleavage induced by diverse stimuli right before apoptosis.

---

Note: This product is for in vitro research use only and is not intended for use in humans or animals.