

## S6K1 Rabbit mAb

Catalog No: #56055

Package Size: #56055-1 50ul #56055-2 100ul

Orders: [order@signalwayantibody.com](mailto:order@signalwayantibody.com)Support: [tech@signalwayantibody.com](mailto:tech@signalwayantibody.com)

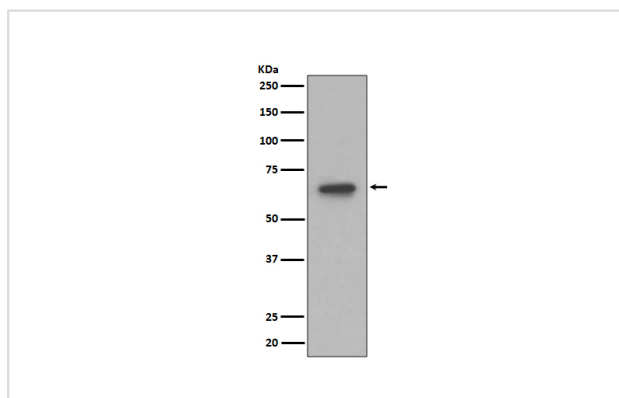
## Description

|                       |   |
|-----------------------|---|
| Product Name          | S6K1 Rabbit mAb   |
| Host Species          | Rabbit  |
| Clonality             | Monoclonal  |
| Isotype               | Rabbit IgG  |
| Purification          | Affinity-chromatography   |
| Applications          | WB IHC IP   |
| Species Reactivity    | Human Mouse Rat   |
| Specificity           | S6K1 Antibody detects endogenous levels of total S6K1   |
| Immunogen Description | A synthesized peptide derived from human S6K1   |
| Other Names           | EC 2.7.11.1; KS6B1; P70-S6K; RPS6KB1; Ribosomal protein S6 kinase, Ribosomal protein S6 kinase 70kDa polypeptide 1; S6K1; kinase p70S6K; p70-S6K; |
| Accession No.         | Uniprot:P23443  |
| Calculated MW         | 70kDa   |
| Formulation           | Rabbit IgG in phosphate buffered saline , pH 7.4, 150mM NaCl, 0.02% sodium azide and 50% glycerol.  |
| Storage               | Store at +4°C short term. Store at -20°C long term. Avoid freeze / thaw cycle.  |

## Application Details

WB:1:500~1:2000IHC:1:50~1:200IP:1:50

## Images



Western blot analysis of S6K1 expression in 293T cell lysate.

## Product Description

This gene encodes a member of the RSK (ribosomal S6 kinase) family of serine/threonine kinases. This kinase contains 2 non-identical kinase catalytic domains and phosphorylates several residues of the S6 ribosomal protein.

---

Note: This product is for in vitro research use only and is not intended for use in humans or animals.