

Osteopontin Rabbit mAb

Catalog No: #56057



Package Size: #56057-1 50ul #56057-2 100ul

Orders: order@signalwayantibody.com

Support: tech@signalwayantibody.com

Description

Product Name	Osteopontin Rabbit mAb
Host Species	Rabbit
Clonality	Monoclonal
Isotype	Rabbit IgG
Purification	Affinity-chromatography
Applications	WB IHC ICC/IF FC
Species Reactivity	Human Mouse
Specificity	Osteopontin Antibody detects endogenous levels of total Osteopontin
Immunogen Description	A synthesized peptide derived from human Osteopontin
Other Names	BNSP; Bone sialoprotein 1; bone sialoprotein I; BSP1; early T-lymphocyte activation 1; ETA-1; Nephropontin; OPN; Osteopontin; OSTP; Secreted phosphoprotein 1;
Accession No.	Uniprot:P10451
Calculated MW	35kDa
Formulation	Rabbit IgG in phosphate buffered saline , pH 7.4, 150mM NaCl, 0.02% sodium azide and 50% glycerol.
Storage	Store at +4°C short term. Store at -20°C long term. Avoid freeze / thaw cycle.

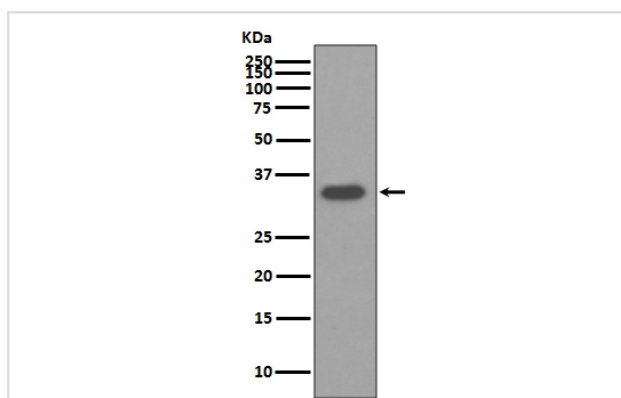
Application Details

WB: 1:500~1:2000

ICC/IF: 1:50~1:200

FC: 1:30

Images



Western blot analysis of Osteopontin expression in HepG2 cell lysate.

Product Description

osteopontin Binds tightly to hydroxyapatite. Appears to form an integral part of the mineralized matrix. Probably important to cell-matrix interaction. Belongs to the osteopontin family. Ligand for integrin alpha-V/beta-3. 4 isoforms of the human protein are produced by alternative splicing.

Note: This product is for in vitro research use only and is not intended for use in humans or animals.