

## Somatostatin Receptor 2 Rabbit mAb

Catalog No: #56064



Package Size: #56064-1 50ul #56064-2 100ul

Orders: order@signalwayantibody.com

Support: tech@signalwayantibody.com

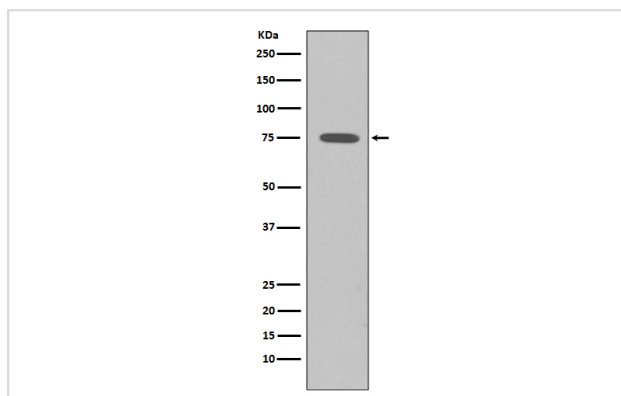
## Description

Product Name	Somatostatin Receptor 2 Rabbit mAb
Host Species	Rabbit
Clonality	Monoclonal
Isotype	Rabbit IgG
Purification	Affinity-chromatography
Applications	WB IHC IP
Species Reactivity	Human Mouse Rat
Specificity	Somatostatin Receptor 2 Antibody detects endogenous levels of total Somatostatin Receptor 2
Immunogen Description	A synthesized peptide derived from human Somatostatin Receptor 2
Other Names	SSTR2; somatostatin receptor 2; SS 2 R; SS2R; SRIF 1; SS2 R;
Accession No.	Uniprot:P30874
Calculated MW	41kDa
Formulation	Rabbit IgG in phosphate buffered saline , pH 7.4, 150mM NaCl, 0.02% sodium azide and 50% glycerol.
Storage	Store at +4°C short term. Store at -20°C long term. Avoid freeze / thaw cycle.

## Application Details

WB:1:1000~1:2000IHC:1:50~1:200IP:1:50

## Images



Western blot analysis of SSTR2 expression in K562 cell lysates.

## Product Description

Somatostatin acts at many sites to inhibit the release of many hormones and other secretory proteins. The biologic effects of somatostatin are probably mediated by a family of G protein-coupled receptors that are expressed in a tissue-specific manner. SSTR2 is a member of the superfamily of receptors having seven transmembrane segments and is expressed in highest levels in cerebrum and kidney.

---

Note: This product is for in vitro research use only and is not intended for use in humans or animals.