

beta II Tubulin Rabbit mAb

Catalog No: #56067



Package Size: #56067-1 50ul #56067-2 100ul

Orders: order@signalwayantibody.com

Support: tech@signalwayantibody.com

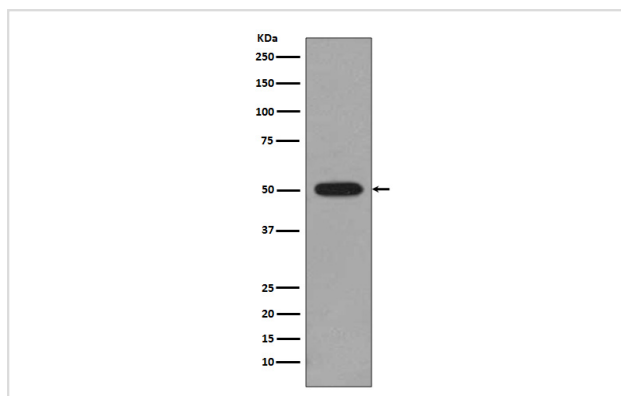
Description

Product Name	beta II Tubulin Rabbit mAb
Host Species	Rabbit
Clonality	Monoclonal
Isotype	Rabbit IgG
Purification	Affinity-chromatography
Applications	WB IHC ICC/IF IP FC
Species Reactivity	Human Mouse Rat
Specificity	beta II Tubulin Antibody detects endogenous levels of total beta II Tubulin
Immunogen Description	A synthesized peptide derived from human beta II Tubulin
Other Names	class II beta tubulin isotype; Beta2; Tubulin beta 2 chain; TUBB; TUBB2;
Accession No.	Uniprot:P68371/Q13885/Q9BVA1
Calculated MW	50kDa
Formulation	Rabbit IgG in phosphate buffered saline , pH 7.4, 150mM NaCl, 0.02% sodium azide and 50% glycerol.
Storage	Store at +4°C short term. Store at -20°C long term. Avoid freeze / thaw cycle.

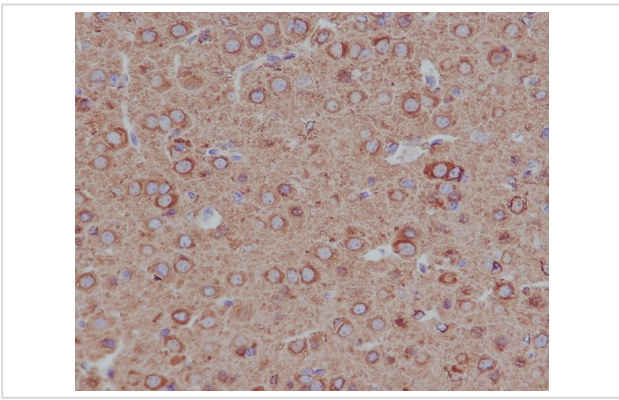
Application Details

WB:1:1000~1:2000IHC:1:50~1:200ICC/IF:1:50~1:200IP:1:50

Images



Western blot analysis of beta II Tubulin expression in C6 cell lysate.



Immunohistochemical analysis of paraffin-embedded mouse brain, using beta II Tubulin Antibody.

Product Description

Tubulin is the major constituent of microtubules. It binds two moles of GTP, one at an exchangeable site on the beta chain and one at a non-exchangeable site on the alpha chain.

Note: This product is for in vitro research use only and is not intended for use in humans or animals.