

RUNX1/RUNX2/RUNX3 Rabbit mAb

Catalog No: #56068



Package Size: #56068-1 50ul #56068-2 100ul

Orders: order@signalwayantibody.comSupport: tech@signalwayantibody.com

Description

Product Name	RUNX1/RUNX2/RUNX3 Rabbit mAb
Host Species	Rabbit
Clonality	Monoclonal
Isotype	Rabbit IgG
Purification	Affinity-chromatography
Applications	WB IHC ICC/IF IP FC
Species Reactivity	Human Mouse Rat
Specificity	RUNX1/RUNX2/RUNX3 Antibody detects endogenous levels of total RUNX1/RUNX2/RUNX3
Immunogen Description	A synthesized peptide derived from human RUNX1/RUNX2/RUNX3
Other Names	RUNX1; AML1; RUNX2; OSF2; RUNX3; CBFA3;
Accession No.	Uniprot:Q01196/Q13761/Q13950
Calculated MW	51kDa
Formulation	Rabbit IgG in phosphate buffered saline , pH 7.4, 150mM NaCl, 0.02% sodium azide and 50% glycerol.
Storage	Store at +4°C short term. Store at -20°C long term. Avoid freeze / thaw cycle.

Application Details

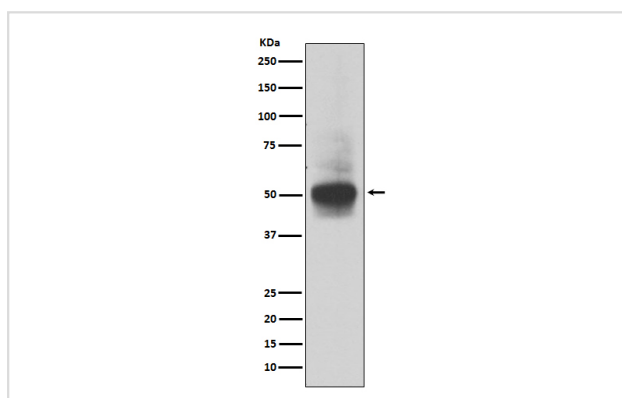
WB:1:500~1:2000

IHC:1:50~1:200

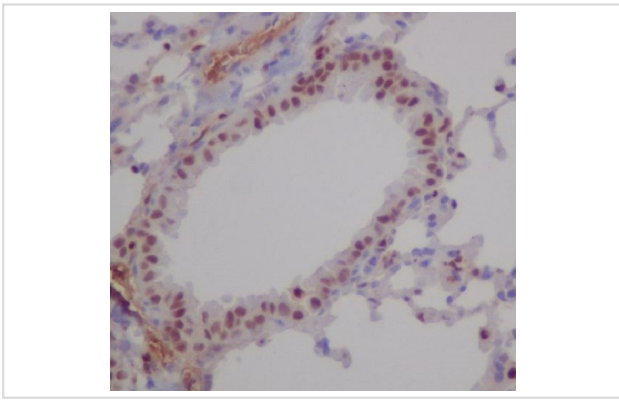
ICC/IF:1:50~1:200

IP:1:50

Images



Western blot analysis of RUNX1/RUNX2/RUNX3 expression in MOLT4 cell lysate.



Immunohistochemical analysis of paraffin-embedded mouse lung, using RUNX1/RUNX2/RUNX3 Antibody.

Product Description

RUNX2 regulates the transcription of various genes including osteopontin, bone sialoprotein, and osteocalcin via binding to the core site of the enhancers or promoters. RUNX3/AML2 is a member of the Runt family of transcription factors. RUNX3 is important for the suppression of cell proliferation in the gastric epithelium, neurogenesis of the dorsal root ganglia, and T cell differentiation.

Note: This product is for in vitro research use only and is not intended for use in humans or animals.