

Transferrin Rabbit mAb

Catalog No: #56069



Package Size: #56069-1 50ul #56069-2 100ul

Orders: order@signalwayantibody.comSupport: tech@signalwayantibody.com

Description

Product Name	Transferrin Rabbit mAb
Host Species	Rabbit
Clonality	Monoclonal
Isotype	Rabbit IgG
Purification	Affinity-chromatography
Applications	WB IHC FC
Species Reactivity	Human
Specificity	Transferrin Antibody detects endogenous levels of total Transferrin
Immunogen Description	A synthesized peptide derived from human Transferrin
Other Names	TFQTL1; TF; TRFE; Transferrin; Serotransferrin; Serotransferrin;
Accession No.	Uniprot:P02787
Calculated MW	77kDa
Formulation	Rabbit IgG in phosphate buffered saline , pH 7.4, 150mM NaCl, 0.02% sodium azide and 50% glycerol.
Storage	Store at +4°C short term. Store at -20°C long term. Avoid freeze / thaw cycle.

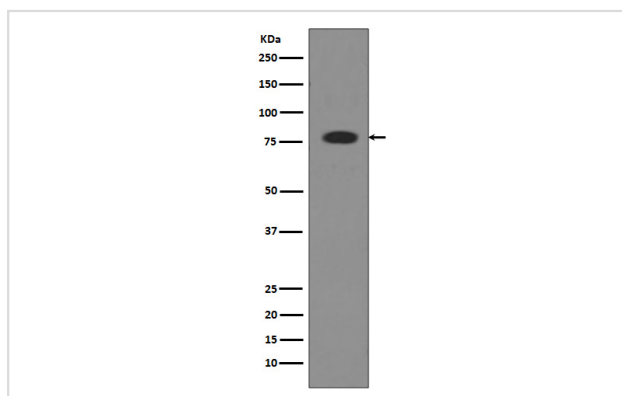
Application Details

WB:1:500~1:2000

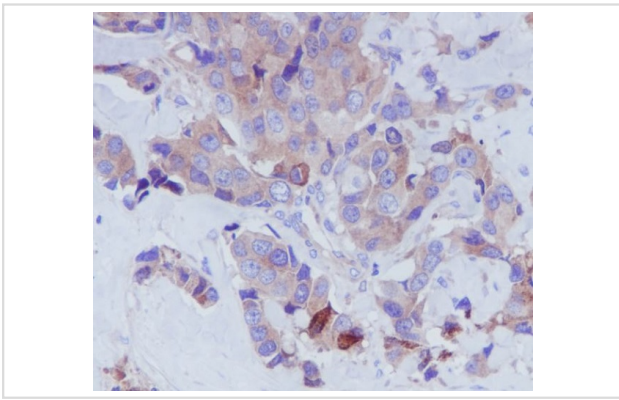
IHC:1:50~1:200

FC:1:50

Images



Western blot analysis of Transferrin expression in Human serum lysate.



Immunohistochemical analysis of paraffin-embedded Human breast carcinoma, using Transferrin Antibody.

Product Description

Transferrins are iron binding transport proteins which can bind two Fe^{3+} ions in association with the binding of an anion, usually bicarbonate. It is responsible for the transport of iron from sites of absorption and heme degradation to those of storage and utilization. Serum transferrin may also have a further role in stimulating cell proliferation.

Note: This product is for in vitro research use only and is not intended for use in humans or animals.