

c-Maf Rabbit mAb

Catalog No: #56084

Package Size: #56084-1 50ul #56084-2 100ul

Orders: order@signalwayantibody.comSupport: tech@signalwayantibody.com

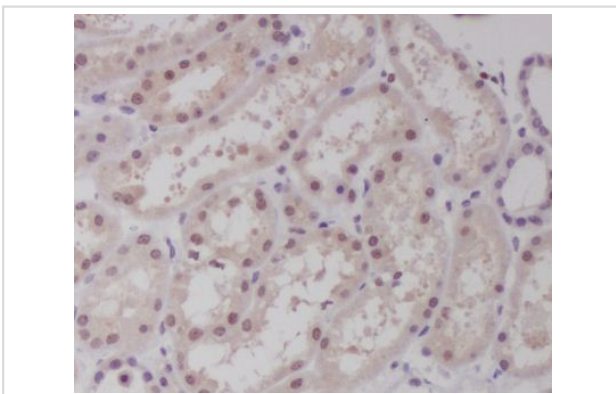
Description

Product Name	c-Maf Rabbit mAb
Host Species	Rabbit
Clonality	Monoclonal
Isotype	Rabbit IgG
Purification	Affinity-chromatography
Applications	IHC
Species Reactivity	Human Mouse Rat
Specificity	c-Maf Antibody detects endogenous levels of total c-Maf
Immunogen Description	A synthesized peptide derived from human c-Maf
Other Names	Avian musculoaponeurotic fibrosarcoma (MAF) protooncogene; c-MAF; c-maf proto-oncogene; cMaf; MAF; MGC71685; Proto-oncogene c-Maf;
Accession No.	Uniprot:O75444
Calculated MW	kDa
Storage	Rabbit IgG in phosphate buffered saline , pH 7.4, 150mM NaCl, 0.02% sodium azide and 50% glycerol. Store at +4°C short term. Store at -20°C long term. Avoid freeze / thaw cycle.

Application Details

IHC:1:50~1:200

Images



Immunohistochemical analysis of paraffin-embedded human kidney, using c-Maf Antibody.

Product Description

Acts as a transcriptional activator or repressor. Involved in embryonic lens fiber cell development. Recruits the transcriptional coactivators CREBBP and/or EP300 to crystallin promoters leading to up-regulation of crystallin gene during lens fiber cell differentiation. Activates the expression of IL4 in T helper 2 (Th2) cells. Increases T-cell susceptibility to apoptosis by interacting with MYB and decreasing BCL2 expression. Together with PAX6, transactivates strongly the glucagon gene promoter through the G1 element.

Note: This product is for in vitro research use only and is not intended for use in humans or animals.