

# Fibrillarin Rabbit mAb

Catalog No: #56085



Package Size: #56085-1 50ul #56085-2 100ul

Orders: [order@signalwayantibody.com](mailto:order@signalwayantibody.com)

Support: [tech@signalwayantibody.com](mailto:tech@signalwayantibody.com)

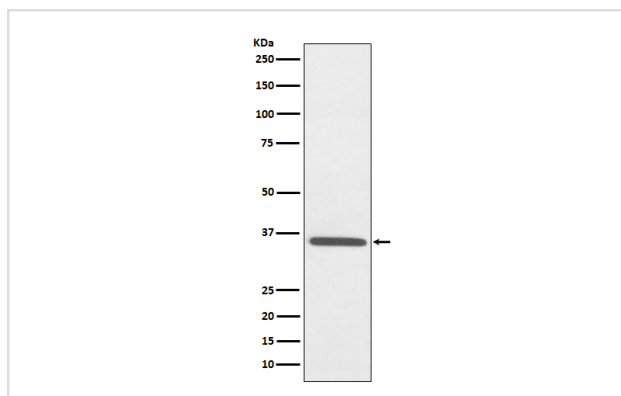
## Description

Product Name	Fibrillarin Rabbit mAb
Host Species	Rabbit
Clonality	Monoclonal
Isotype	Rabbit IgG
Purification	Affinity-chromatography
Applications	WB IHC ICC/IF IP FC
Species Reactivity	Human Mouse Rat
Specificity	Fibrillarin Antibody detects endogenous levels of total Fibrillarin
Immunogen Description	A synthesized peptide derived from human Fibrillarin
Other Names	FBL;FIB;FLRN;RNU3IP1;
Accession No.	Uniprot:P22087
Calculated MW	33kDa
Formulation	Rabbit IgG in phosphate buffered saline , pH 7.4, 150mM NaCl, 0.02% sodium azide and 50% glycerol.
Storage	Store at +4°C short term. Store at -20°C long term. Avoid freeze / thaw cycle.

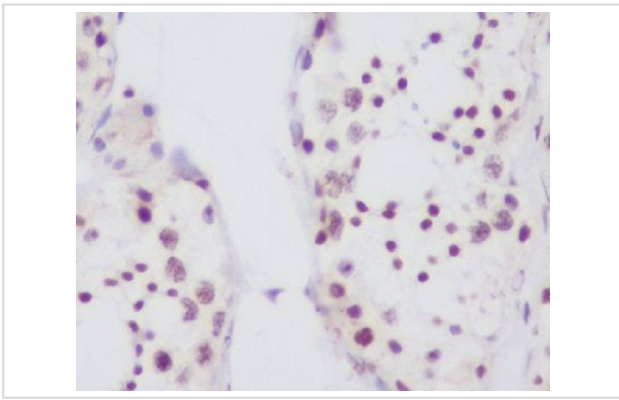
## Application Details

WB:1:500~1:2000IHC:1:50~1:100ICC/IF:1:50~1:100IP::1:30FC:1:50

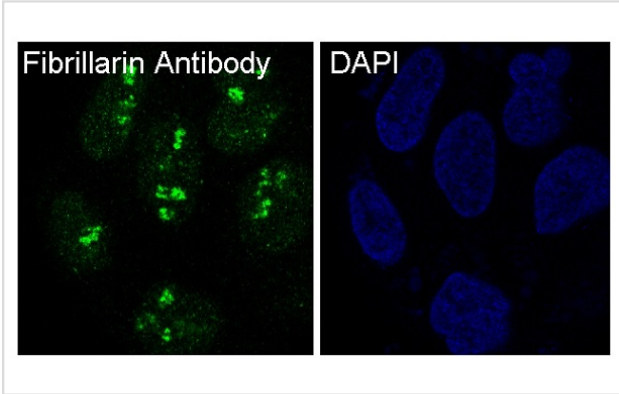
## Images



Western blot analysis of Fibrillarin expression in HepG2 cell lysate.



Immunohistochemical analysis of paraffin-embedded human testis, using Fibrillarin Antibody.



Immunofluorescent analysis of HeLa cells, using Fibrillarin Antibody .

## Product Description

Fibrillarin is a 2'-O-methyltransferase located in fibrillar regions and Cajal bodies of the nucleolus, where RNA transcription and pre-RNA processing take place. Fibrillarin associates with several other structural proteins as well as box C/D snoRNA to form a complex that functions in pre-rRNA processing, pre-rRNA methylation and ribosome assembly. This complex catalyzes site-specific 2'-O-ribose methylation of targeted nucleotides within the rRNA sequence. The sequence, structure and function of fibrillarin are highly conserved and fibrillarin gene expression is essential for early embryonic development.

Note: This product is for in vitro research use only and is not intended for use in humans or animals.