

# CCR3 Rabbit mAb

Catalog No: #56092



Package Size: #56092-1 50ul #56092-2 100ul

Orders: [order@signalwayantibody.com](mailto:order@signalwayantibody.com)

Support: [tech@signalwayantibody.com](mailto:tech@signalwayantibody.com)

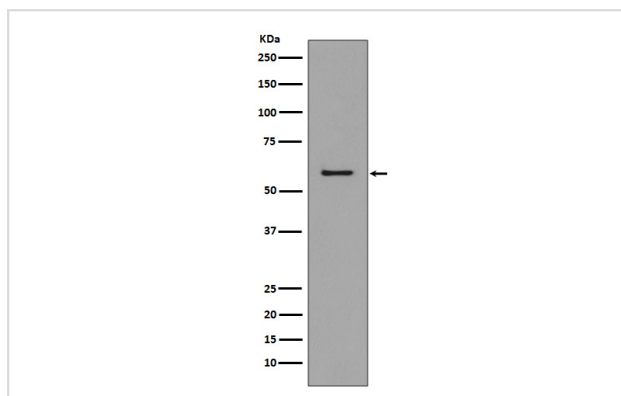
## Description

Product Name	CCR3 Rabbit mAb
Host Species	Rabbit
Clonality	Monoclonal
Isotype	Rabbit IgG
Purification	Affinity-chromatography
Applications	WB IHC ICC/IF
Species Reactivity	Human Mouse Rat
Specificity	CCR3 Antibody detects endogenous levels of total CCR3
Immunogen Description	A synthesized peptide derived from human CCR3
Other Names	CCR3; CD193; CCCKR3; CMKBR3; CKR3; CMKBR1L2; C-C chemokine receptor type 3;
Accession No.	Uniprot:P51677
Calculated MW	60kDa
Formulation	Rabbit IgG in phosphate buffered saline , pH 7.4, 150mM NaCl, 0.02% sodium azide and 50% glycerol.
Storage	Store at +4°C short term. Store at -20°C long term. Avoid freeze / thaw cycle.

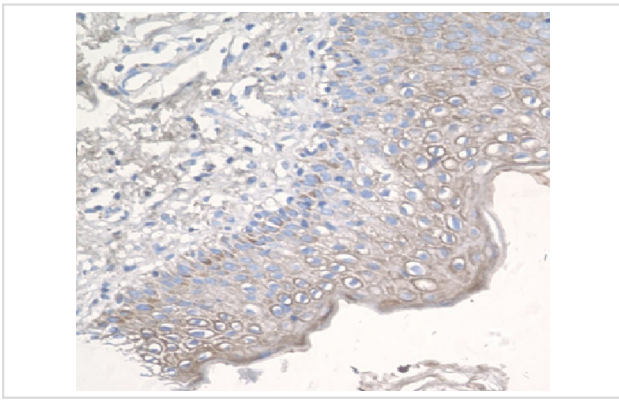
## Application Details

WB:1:500~1:2000IHC:1:50~1:200ICC/IF:1:50~1:200

## Images



Western blot analysis of CCR3 expression in K562 cell lysate.



Immunohistochemical analysis of paraffin-embedded human epidermal cells of skin, using CCR3 Antibody .

## Product Description

Receptor for a C-C type chemokine. Binds to eotaxin, eotaxin-3, MCP-3, MCP-4, RANTES and MIP-1 delta. Subsequently transduces a signal by increasing the intracellular calcium ions level. Alternative coreceptor with CD4 for HIV-1 infection.

Note: This product is for in vitro research use only and is not intended for use in humans or animals.