

Caspase-7 Rabbit mAb

Catalog No: #56098

Package Size: #56098-1 50ul #56098-2 100ul

Orders: order@signalwayantibody.com

Support: tech@signalwayantibody.com

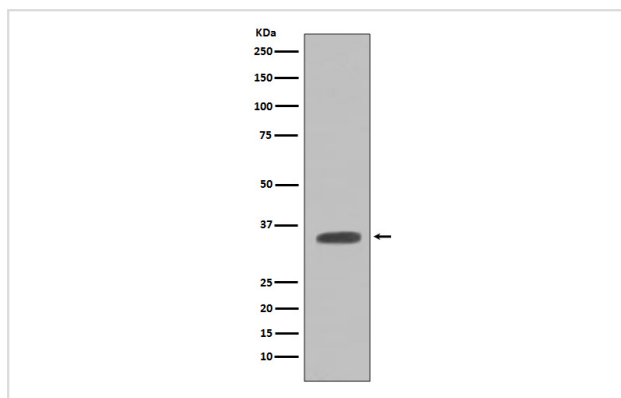
Description

Product Name	Caspase-7 Rabbit mAb
Host Species	Rabbit
Clonality	Monoclonal
Isotype	Rabbit IgG
Purification	Affinity-chromatography
Applications	WB IHC IP
Species Reactivity	Mouse Rat
Specificity	Caspase-7 Antibody detects endogenous levels of Caspase-7
Immunogen Description	A synthesized peptide derived from human Caspase-7
Other Names	CMH-1; ICE-LAP3; MCH3; CASP7; Caspase-7; Caspase7;
Accession No.	Uniprot:P97864
Calculated MW	34kDa
Formulation	Rabbit IgG in phosphate buffered saline , pH 7.4, 150mM NaCl, 0.02% sodium azide and 50% glycerol.
Storage	Store at +4°C short term. Store at -20°C long term. Avoid freeze / thaw cycle.

Application Details

WB:1:500~1:1000IHC:1:50~1:200IP:1:50

Images



Western blot analysis of Caspase-7 expression in NIH/3T3 cell lysate.

Product Description

Caspase-7 (CMH-1, Mch3, ICE-LAP3) has been identified as a major contributor to the execution of apoptosis. Caspase-7 is an effector caspase (along with caspase-2 and -3), meaning that it cleaves essential cellular machinery rather than activating other caspases. Caspase-7 is cleaved by many enzymes, including caspases-3, -6, -8, -9 and granzyme B. Once activated, caspase-7 cleaves many of the same substrates as caspase-3, including poly (ADP-ribose) polymerase, or PARP.

Note: This product is for in vitro research use only and is not intended for use in humans or animals.