

Raptor Rabbit mAb

Catalog No: #56101



Package Size: #56101-1 50ul #56101-2 100ul

Orders: order@signalwayantibody.com

Support: tech@signalwayantibody.com

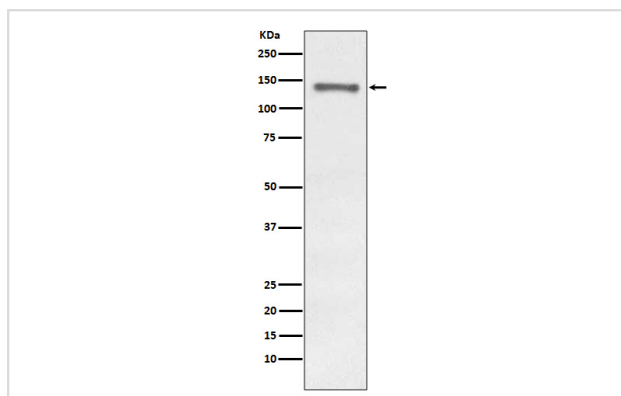
Description

Product Name	Raptor Rabbit mAb
Host Species	Rabbit
Clonality	Monoclonal
Isotype	Rabbit IgG
Purification	Affinity-chromatography
Applications	WB IHC ICC/IF IP FC
Species Reactivity	Human Mouse Rat
Specificity	Raptor Antibody detects endogenous levels of Raptor
Immunogen Description	A synthesized peptide derived from human Raptor
Other Names	RPTOR; KOG1; KIAA1303; RAPTOR; Mip1;
Accession No.	Uniprot:Q8N122
Calculated MW	149kDa
Formulation	Rabbit IgG in phosphate buffered saline , pH 7.4, 150mM NaCl, 0.02% sodium azide and 50% glycerol.
Storage	Store at +4°C short term. Store at -20°C long term. Avoid freeze / thaw cycle.

Application Details

WB:1:500~1:1000IHC:1:50~1:100ICC/IF:1:50~1:100IP:1:30FC:1:30

Images



Western blot analysis of Raptor expression in MCF-7 cell lysate.

Product Description

The regulatory associated protein of mTOR (Raptor) was identified as an mTOR binding partner that mediates mTOR signaling to downstream targets. Raptor binds to mTOR substrates, including 4E-BP1 and p70 S6 kinase, through their TOR signaling (TOS) motifs and is required for mTOR-mediated phosphorylation of these substrates. Binding of the FKBP12-rapamycin complex to mTOR inhibits the mTOR-raptor interaction, suggesting a mechanism for rapamycin's specific inhibition of mTOR signaling. This mTOR-raptor interaction and its regulation by nutrients and/or rapamycin is dependent on a protein called GβL.

Note: This product is for in vitro research use only and is not intended for use in humans or animals.