

STAT5A/B Rabbit mAb

Catalog No: #56109



Package Size: #56109-1 50ul #56109-2 100ul

Orders: order@signalwayantibody.com

Support: tech@signalwayantibody.com

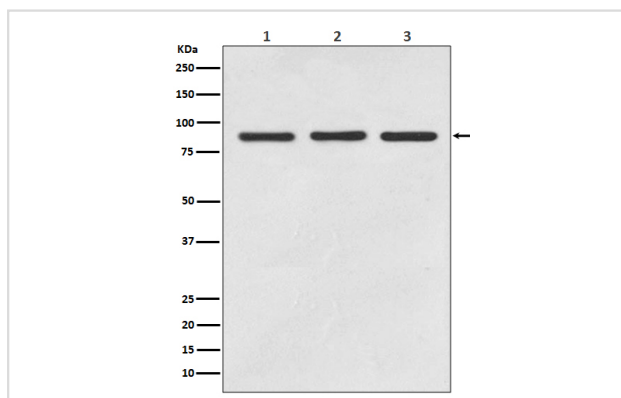
Description

Product Name	STAT5A/B Rabbit mAb
Host Species	Rabbit
Clonality	Monoclonal
Isotype	Rabbit IgG
Purification	Affinity-chromatography
Applications	WB IHC ICC/IF IP FC
Species Reactivity	Human Mouse Rat
Specificity	STAT5A/B Antibody detects endogenous levels of STAT5A/B
Immunogen Description	A synthesized peptide derived from human STAT5A/B
Other Names	Mammary gland factor (STAT5A); Signal transducer and activator of transcription 5A; Stat 5a; STAT 5b; STAT5A; Transcription factor STAT5B;
Accession No.	Uniprot:P42229/P51692
Calculated MW	90kDa
Formulation	Rabbit IgG in phosphate buffered saline , pH 7.4, 150mM NaCl, 0.02% sodium azide and 50% glycerol.
Storage	Store at +4°C short term. Store at -20°C long term. Avoid freeze / thaw cycle.

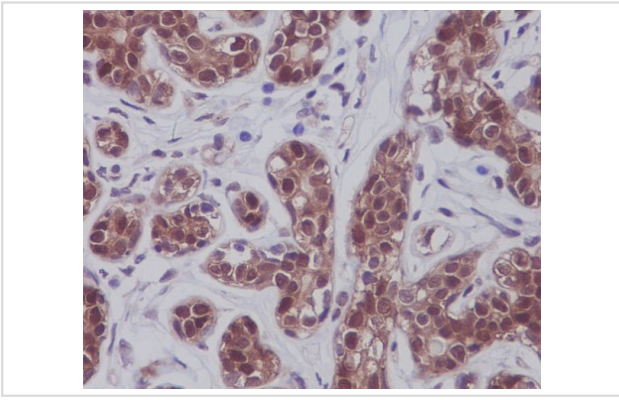
Application Details

WB:1:1000~1:2000IHC:1:100~1:500ICC/IF:1:50~1:200IP:1:50FC:1:50

Images



Western blot analysis of STAT5A/B expression in (1) Jurkat cell lysate; (2) 3T3 cell lysate; (2) PC12 cell lysate.



Immunohistochemical analysis of paraffin-embedded human breast, using STAT5A/B Antibody.

Product Description

Carries out a dual function: signal transduction and activation of transcription. Binds to the GAS element and activates PRL-induced transcription.

Note: This product is for in vitro research use only and is not intended for use in humans or animals.