

JNK1/JNK3 Rabbit mAb

Catalog No: #56119



Package Size: #56119-1 50ul #56119-2 100ul

Orders: order@signalwayantibody.com

Support: tech@signalwayantibody.com

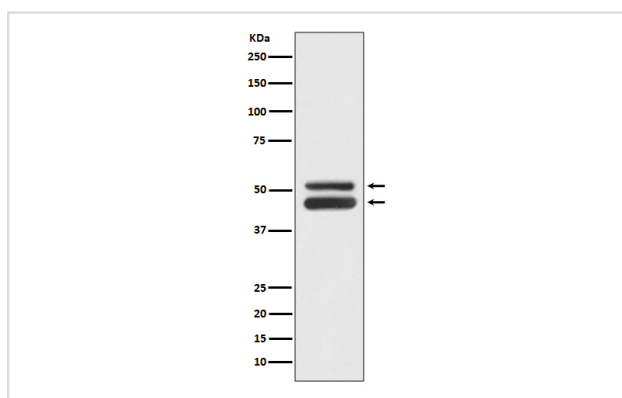
Description

Product Name	JNK1/JNK3 Rabbit mAb
Host Species	Rabbit
Clonality	Monoclonal
Isotype	Rabbit IgG
Purification	Affinity-chromatography
Applications	WB IP
Species Reactivity	Human Mouse Rat
Specificity	JNK1/JNK3 Antibody detects endogenous levels of total JNK1/JNK3
Immunogen Description	A synthesized peptide derived from human JNK1/JNK3
Other Names	c-Jun N-terminal kinase 3; FLJ12099; FLJ33785; JNK1; JNK3; JNK3 alpha protein kinase; JNK3A; MAP kinase 10; MAP kinase p49 3F12; MAPK 10; MAPK10;
Accession No.	Uniprot:P45983/P53779
Calculated MW	46,54kDa
Formulation	Rabbit IgG in phosphate buffered saline , pH 7.4, 150mM NaCl, 0.02% sodium azide and 50% glycerol.
Storage	Store at +4°C short term. Store at -20°C long term. Avoid freeze / thaw cycle.

Application Details

WB:1:1000~1:2000IP:1:50

Images



Western blot analysis of JNK1/JNK3 expression in HeLa cell lysate.

Product Description

The stress-activated protein kinase/Jun-amino-terminal kinase SAPK/JNK is potently and preferentially activated by a variety of environmental stresses including UV and gamma radiation, ceramides, inflammatory cytokines, and in some instances, by growth factors and GPCR agonists. As with the other MAPKs, the core signaling unit is composed of a MAPKKK, typically MEKK1-MEKK4, or by one of the mixed lineage kinases (MLKs), which phosphorylate and activate MKK4/7.

Note: This product is for in vitro research use only and is not intended for use in humans or animals.