

## CITED2 Rabbit mAb

Catalog No: #56121

Package Size: #56121-1 50ul #56121-2 100ul

Orders: order@signalwayantibody.com

Support: tech@signalwayantibody.com

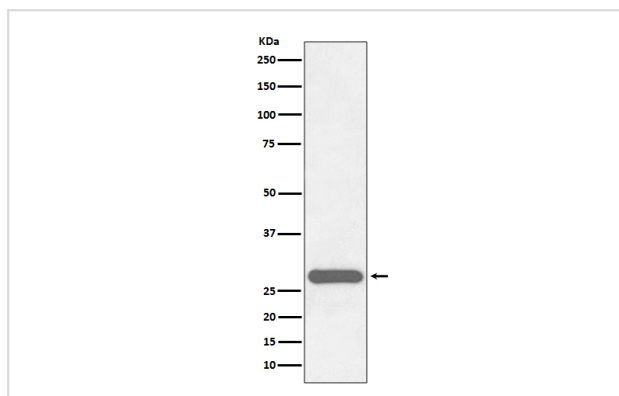
## Description

Product Name	CITED2 Rabbit mAb
Host Species	Rabbit
Clonality	Monoclonal
Isotype	Rabbit IgG
Purification	Affinity-chromatography
Applications	WB
Species Reactivity	Human Mouse
Specificity	CITED2 Antibody detects endogenous levels of total CITED2
Immunogen Description	A synthesized peptide derived from human CITED2
Other Names	CITED2; MRG1; MRG-1; MSG-related protein 1; ASD8; VSD2; MSG1-related gene 1; p35SRJ;
Accession No.	Uniprot:Q99967
Calculated MW	28kDa
Formulation	Rabbit IgG in phosphate buffered saline , pH 7.4, 150mM NaCl, 0.02% sodium azide and 50% glycerol.
Storage	Store at +4°C short term. Store at -20°C long term. Avoid freeze / thaw cycle.

## Application Details

WB:1:500~1:2000

## Images



Western blot analysis of CITED2 expression in HeLa cell lysate.

## Product Description

Transcriptional coactivator of the p300/CBP-mediated transcription complex. Acts as a bridge, linking TFAP2 transcription factors and the p300/CBP transcriptional coactivator complex in order to stimulate TFAP2-mediated transcriptional activation. Positively regulates TGF-beta signaling through its association with the SMAD/p300/CBP-mediated transcriptional coactivator complex. Stimulates the peroxisome proliferator-activated receptors PPARA transcriptional activity.

---

Note: This product is for in vitro research use only and is not intended for use in humans or animals.