

## BMP11 Rabbit mAb

Catalog No: #56128

Package Size: #56128-1 50ul #56128-2 100ul

Orders: [order@signalwayantibody.com](mailto:order@signalwayantibody.com)Support: [tech@signalwayantibody.com](mailto:tech@signalwayantibody.com)

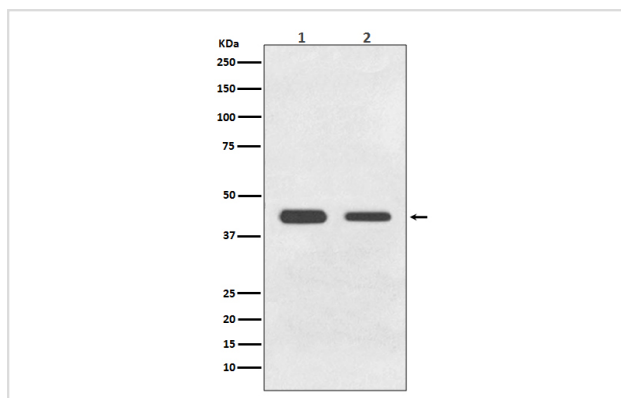
## Description

Product Name	BMP11 Rabbit mAb
Host Species	Rabbit
Clonality	Monoclonal
Isotype	Rabbit IgG
Purification	Affinity-chromatography
Applications	WB IHC ICC/IF
Species Reactivity	Human Rat
Specificity	BMP11 Antibody detects endogenous levels of total BMP11
Immunogen Description	A synthesized peptide derived from human BMP11
Other Names	GDF11; BMP11; Bone morphogenetic protein 11; GDF-11; BMP-11;
Accession No.	Uniprot:O95390
Calculated MW	45kDa
Formulation	Rabbit IgG in phosphate buffered saline , pH 7.4, 150mM NaCl, 0.02% sodium azide and 50% glycerol.
Storage	Store at +4°C short term. Store at -20°C long term. Avoid freeze / thaw cycle.

## Application Details

WB:1:500~1:2000IHC:1:50~1:200ICC/IF:1:50~1:200

## Images



Western blot analysis of BMP11 expression in (1) HeLa cell lysate; (2) C6 cell lysate.

## Product Description

Secreted signal that acts globally to specify positional identity along the anterior/posterior axis during development. Play critical roles in patterning both mesodermal and neural tissues and in establishing the skeletal pattern.

---

Note: This product is for in vitro research use only and is not intended for use in humans or animals.