

TIMP1 Rabbit mAb

Catalog No: #56142

Package Size: #56142-1 50ul #56142-2 100ul

Orders: order@signalwayantibody.comSupport: tech@signalwayantibody.com

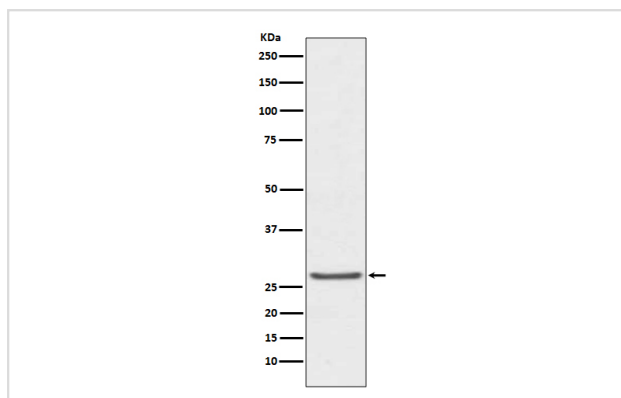
Description

Product Name	TIMP1 Rabbit mAb
Host Species	Rabbit
Clonality	Monoclonal
Isotype	Rabbit IgG
Purification	Affinity-chromatography
Applications	WB IHC ICC/IF
Species Reactivity	Human
Specificity	TIMP1 Antibody detects endogenous levels of total TIMP1
Immunogen Description	A synthesized peptide derived from human TIMP1
Other Names	EPO; EPA; TIMP1; CLGI;
Accession No.	Uniprot:P01033
Calculated MW	26kDa
Formulation	Rabbit IgG in phosphate buffered saline , pH 7.4, 150mM NaCl, 0.02% sodium azide and 50% glycerol.
Storage	Store at +4°C short term. Store at -20°C long term. Avoid freeze / thaw cycle.

Application Details

WB:1:100~1:500IHC:1:50~1:200ICC/IF:1:50~1:200

Images



Western blot analysis of TIMP1 expression in human prostate cancer lysate.

Product Description

Complexes with metalloproteinases (such as collagenases) and irreversibly inactivates them by binding to their catalytic zinc cofactor. Also mediates erythropoiesis in vitro; but, unlike IL-3, it is species-specific, stimulating the growth and differentiation of only human and murine erythroid progenitors.

Note: This product is for in vitro research use only and is not intended for use in humans or animals.