

## Lactoferrin Rabbit mAb

Catalog No: #56155



Package Size: #56155-1 50ul #56155-2 100ul

Orders: order@signalwayantibody.com

Support: tech@signalwayantibody.com

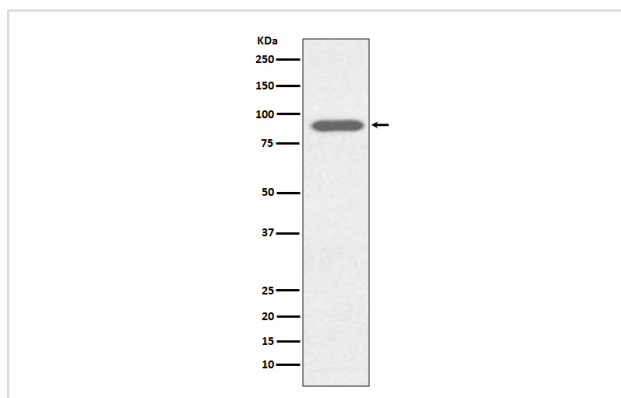
## Description

Product Name	Lactoferrin Rabbit mAb
Host Species	Rabbit
Clonality	Monoclonal
Isotype	Rabbit IgG
Purification	Affinity-chromatography
Applications	WB IHC IP
Species Reactivity	Human
Specificity	Lactoferrin Antibody detects endogenous levels of total Lactoferrin
Immunogen Description	A synthesized peptide derived from human Lactoferrin
Other Names	GIG12; Growth inhibiting protein 12; HLF2; Kaliocin 1; Lactoferrin; Lactoferroxin-C; Lactotransferrin; LF; LTF; Neutrophil lactoferrin; Talalactoferrin;
Accession No.	Uniprot:P02788
Calculated MW	78kDa
Formulation	Rabbit IgG in phosphate buffered saline , pH 7.4, 150mM NaCl, 0.02% sodium azide and 50% glycerol.
Storage	Store at +4°C short term. Store at -20°C long term. Avoid freeze / thaw cycle.

## Application Details

WB:1:500~1:2000IHC:1:50~1:200IP:1:50

## Images



Western blot analysis of Lactoferrin expression in HeLa cell lysate.

## Product Description

Lactoferroxins A, B and C have opioid antagonist activity. Lactoferroxin A shows preference for mu-receptors, while lactoferroxin B and C have somewhat higher degrees of preference for kappa-receptors than for mu-receptors.

---

Note: This product is for in vitro research use only and is not intended for use in humans or animals.