

## GCET1 Rabbit mAb

Catalog No: #56166

Package Size: #56166-1 50ul #56166-2 100ul

Orders: [order@signalwayantibody.com](mailto:order@signalwayantibody.com)Support: [tech@signalwayantibody.com](mailto:tech@signalwayantibody.com)

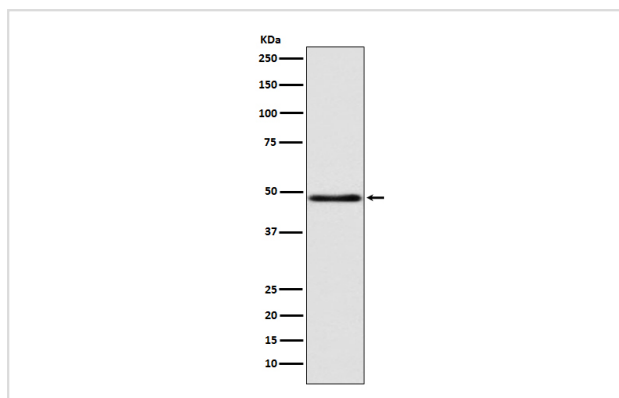
## Description

Product Name	GCET1 Rabbit mAb
Host Species	Rabbit
Clonality	Monoclonal
Isotype	Rabbit IgG
Purification	Affinity-chromatography
Applications	WB
Species Reactivity	Human Mouse Rat
Specificity	GCET1 Antibody detects endogenous levels of total GCET1
Immunogen Description	A synthesized peptide derived from human GCET1
Other Names	Centerin; GCET1; Seprin A9; SERPINA11; SERPINA11b; Serpina9;
Accession No.	Uniprot:Q86WD7
Calculated MW	47kDa
Formulation	Rabbit IgG in phosphate buffered saline , pH 7.4, 150mM NaCl, 0.02% sodium azide and 50% glycerol.
Storage	Store at +4°C short term. Store at -20°C long term. Avoid freeze / thaw cycle.

## Application Details

WB: 1:500~1:2000

## Images



Western blot analysis of GCET1 expression in MCF7 cell lysate.

## Product Description

Protease inhibitor that inhibits trypsin and trypsin-like serine proteases (in vitro). Inhibits plasmin and thrombin with lower efficiency (in vitro).

---

Note: This product is for in vitro research use only and is not intended for use in humans or animals.