

## Claudin 1 Rabbit mAb

Catalog No: #56168

Package Size: #56168-1 50ul #56168-2 100ul

Orders: [order@signalwayantibody.com](mailto:order@signalwayantibody.com)Support: [tech@signalwayantibody.com](mailto:tech@signalwayantibody.com)

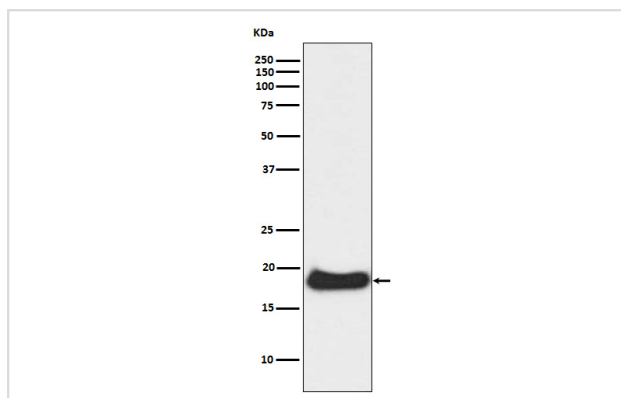
## Description

Product Name	Claudin 1 Rabbit mAb
Host Species	Rabbit
Clonality	Monoclonal
Isotype	Rabbit IgG
Purification	Affinity-chromatography
Applications	WB
Species Reactivity	Human Mouse Rat
Specificity	Claudin 1 Antibody detects endogenous levels of total Claudin 1
Immunogen Description	A synthesized peptide derived from human Claudin 1
Other Names	Claudin1; CLD1;CLDN 1; ILVASC; SEMP1;
Accession No.	Uniprot:O95832
Calculated MW	19kDa
Formulation	Rabbit IgG in phosphate buffered saline , pH 7.4, 150mM NaCl, 0.02% sodium azide and 50% glycerol.
Storage	Store at +4°C short term. Store at -20°C long term. Avoid freeze / thaw cycle.

## Application Details

WB:1:500~1:2000

## Images



Western blot analysis of Claudin 1 expression in A431 cell lysate.

## Product Description

The claudin family is composed of 23 integral membrane proteins, and their expression, which varies among tissue types, may determine both the strength and properties of the epithelial barrier. Alteration in claudin protein expression pattern is associated with several types of cancer. Claudin-1 is expressed primarily in keratinocytes and normal mammary epithelial cells, but is absent or reduced in breast carcinomas and breast cancer cell lines.

---

Note: This product is for in vitro research use only and is not intended for use in humans or animals.