

EAAT1 Rabbit mAb

Catalog No: #56170

Package Size: #56170-1 50ul #56170-2 100ul

Orders: order@signalwayantibody.com

Support: tech@signalwayantibody.com

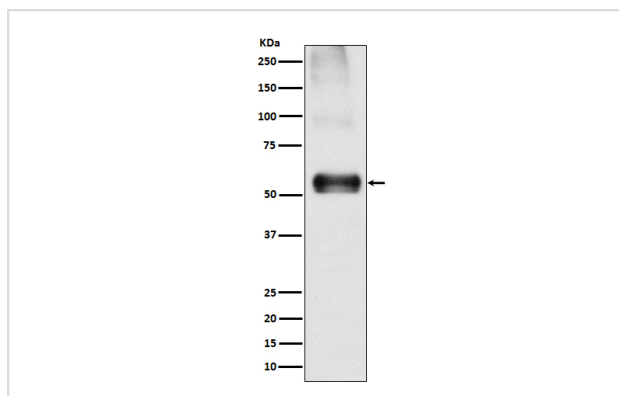
Description

Product Name	EAAT1 Rabbit mAb
Host Species	Rabbit
Clonality	Monoclonal
Isotype	Rabbit IgG
Purification	Affinity-chromatography
Applications	WB IHC
Species Reactivity	Human Mouse Rat
Specificity	EAAT1 Antibody detects endogenous levels of total EAAT1
Immunogen Description	A synthesized peptide derived from human EAAT1
Other Names	EA6; EAAT1; GLAST1; Slc1a3;
Accession No.	Uniprot:P43003
Calculated MW	59kDa
Formulation	Rabbit IgG in phosphate buffered saline , pH 7.4, 150mM NaCl, 0.02% sodium azide and 50% glycerol.
Storage	Store at +4°C short term. Store at -20°C long term. Avoid freeze / thaw cycle.

Application Details

WB:1:500~1:2000IHC:1:50~1:200

Images



Western blot analysis of EAAT1 expression in Mouse brain lysate.

Product Description

EAAT1 has neuroprotective potential following ischemia since reactive astrocytes and activated microglia express EAAT1 but not EAAT2.

Note: This product is for in vitro research use only and is not intended for use in humans or animals.