

Calpain 1 Rabbit mAb

Catalog No: #56175



Package Size: #56175-1 50ul #56175-2 100ul

Orders: order@signalwayantibody.com

Support: tech@signalwayantibody.com

Description

Product Name	Calpain 1 Rabbit mAb
Host Species	Rabbit
Clonality	Monoclonal
Isotype	Rabbit IgG
Purification	Affinity-chromatography
Applications	WB IHC ICC/IF FC
Species Reactivity	Human Mouse Rat
Specificity	Calpain 1 Antibody detects endogenous levels of total Calpain 1
Immunogen Description	A synthesized peptide derived from human Calpain 1
Other Names	Calpain-1 catalytic subunit; CANP; CANP small subunit; CANPL1; CAPN1; Micromolar Calpain; Mu Calpain; muCANP;
Accession No.	Uniprot:P07384
Calculated MW	75,80kDa
Formulation	Rabbit IgG in phosphate buffered saline , pH 7.4, 150mM NaCl, 0.02% sodium azide and 50% glycerol.
Storage	Store at +4°C short term. Store at -20°C long term. Avoid freeze / thaw cycle.

Application Details

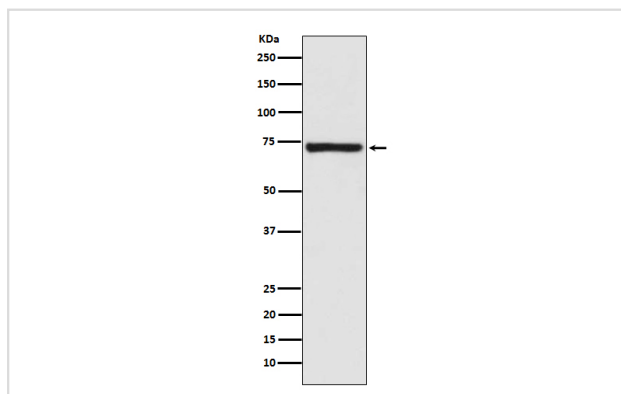
WB: 1:500~1:2000

IHC: 1:50~1:200

ICC/IF: 1:50~1:200

FC: 1:100

Images



Western blot analysis of Calpain 1 expression in Human fetal kidney lysate.

Product Description

Calcium-regulated non-lysosomal thiol-protease which catalyze limited proteolysis of substrates involved in cytoskeletal remodeling and signal

transduction.

Note: This product is for in vitro research use only and is not intended for use in humans or animals.