

## Fibulin 5 Rabbit mAb

Catalog No: #56191

Package Size: #56191-1 50ul #56191-2 100ul

Orders: [order@signalwayantibody.com](mailto:order@signalwayantibody.com)Support: [tech@signalwayantibody.com](mailto:tech@signalwayantibody.com)

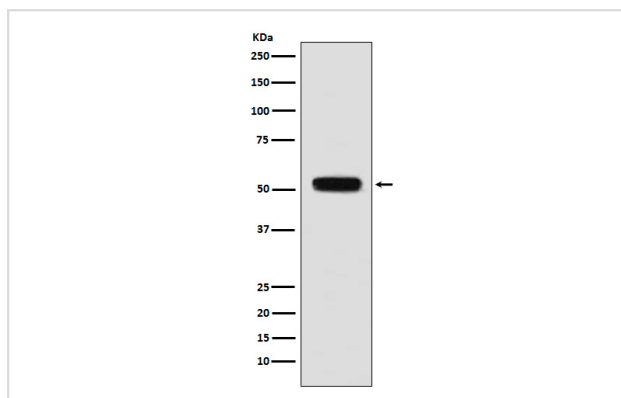
## Description

Product Name	Fibulin 5 Rabbit mAb
Host Species	Rabbit
Clonality	Monoclonal
Isotype	Rabbit IgG
Purification	Affinity-chromatography
Applications	WB
Species Reactivity	Human Mouse
Specificity	Fibulin 5 Antibody detects endogenous levels of total Fibulin 5
Immunogen Description	A synthesized peptide derived from human Fibulin 5
Other Names	Fibulin-5; FIBL-5; Fibulin 5; FIBL 5; Fibulin5; FIBL5; Dance; Urine p50 protein; UP50; DANCE;
Accession No.	Uniprot:Q9UBX5
Calculated MW	50kDa
Formulation	Rabbit IgG in phosphate buffered saline , pH 7.4, 150mM NaCl, 0.02% sodium azide and 50% glycerol.
Storage	Store at +4°C short term. Store at -20°C long term. Avoid freeze / thaw cycle.

## Application Details

WB:1:500~1:2000

## Images



Western blot analysis of Fibulin 5 expression in mouse heart lysate.

## Product Description

Promotes adhesion of endothelial cells through interaction of integrins and the RGD motif. Could be a vascular ligand for integrin receptors and may play a role in vascular development and remodeling.

---

Note: This product is for in vitro research use only and is not intended for use in humans or animals.