

PTGER2 Rabbit mAb

Catalog No: #56192

Package Size: #56192-1 50ul #56192-2 100ul

Orders: order@signalwayantibody.com

Support: tech@signalwayantibody.com

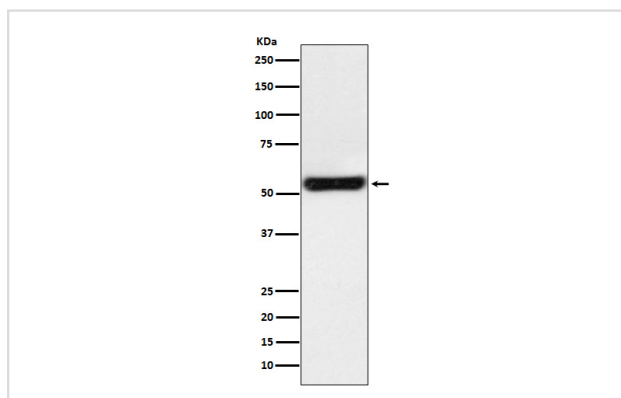
Description

| | |
|-----------------------|---|
| Product Name | PTGER2 Rabbit mAb |
| Host Species | Rabbit |
| Clonality | Monoclonal |
| Isotype | Rabbit IgG |
| Purification | Affinity-chromatography |
| Applications | WB IHC ICC/IF FC |
| Species Reactivity | Human Mouse Rat Cow |
| Specificity | PTGER2 Antibody detects endogenous levels of total PTGER2 |
| Immunogen Description | A synthesized peptide derived from human PTGER2 |
| Other Names | EP2; PGE2 receptor EP2 subtype; Prostaglandin E receptor 2 subtype EP2 53kDa; Prostaglandin E2 receptor EP2 subtype; Prostanoid EP2 receptor; Ptger2; |
| Accession No. | Uniprot:P43116 |
| Calculated MW | 52kDa |
| Formulation | Rabbit IgG in phosphate buffered saline , pH 7.4, 150mM NaCl, 0.02% sodium azide and 50% glycerol. |
| Storage | Store at +4°C short term. Store at -20°C long term. Avoid freeze / thaw cycle. |

Application Details

WB:1:500~1:2000IHC:1:100~1:500ICC/IF:1:50~1:200FC:1:50

Images



Western blot analysis of PTGER2 expression in JAR cell lysate.

Product Description

Receptor for prostaglandin E2 (PGE2). The activity of this receptor is mediated by G(s) proteins that stimulate adenylate cyclase. The subsequent raise in intracellular cAMP is responsible for the relaxing effect of this receptor on smooth muscle.

Note: This product is for in vitro research use only and is not intended for use in humans or animals.