

## FRS2 Rabbit mAb

Catalog No: #56195

Package Size: #56195-1 50ul #56195-2 100ul

Orders: [order@signalwayantibody.com](mailto:order@signalwayantibody.com)Support: [tech@signalwayantibody.com](mailto:tech@signalwayantibody.com)

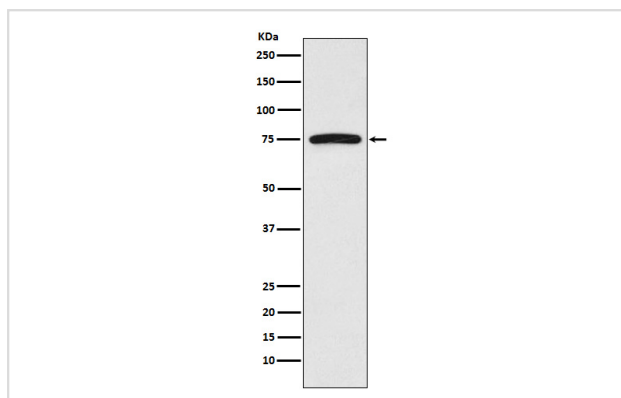
## Description

Product Name	FRS2 Rabbit mAb
Host Species	Rabbit
Clonality	Monoclonal
Isotype	Rabbit IgG
Purification	Affinity-chromatography
Applications	WB IP FC
Species Reactivity	Human
Specificity	FRS2 Antibody detects endogenous levels of total FRS2
Immunogen Description	A synthesized peptide derived from human FRS2
Other Names	FGFR signaling adaptor SNT; FGFR substrate 2; FRS2; FRS2A; FRS2 alpha; SNT; SNT1; Suc 1;
Accession No.	Uniprot:Q8WU20
Calculated MW	57kDa
Formulation	Rabbit IgG in phosphate buffered saline , pH 7.4, 150mM NaCl, 0.02% sodium azide and 50% glycerol.
Storage	Store at +4°C short term. Store at -20°C long term. Avoid freeze / thaw cycle.

## Application Details

WB:1:500~1:2000IP:1:50FC:1:20

## Images



Western blot analysis of FRS2 expression in HeLa cell lysate.

## Product Description

Adapter protein that links FGR and NGF receptors to downstream signaling pathways. Involved in the activation of MAP kinases. Modulates signaling via SHC1 by competing for a common binding site on NTRK1.

---

Note: This product is for in vitro research use only and is not intended for use in humans or animals.