

PON1 Rabbit mAb

Catalog No: #56199



Package Size: #56199-1 50ul #56199-2 100ul

Orders: order@signalwayantibody.com

Support: tech@signalwayantibody.com

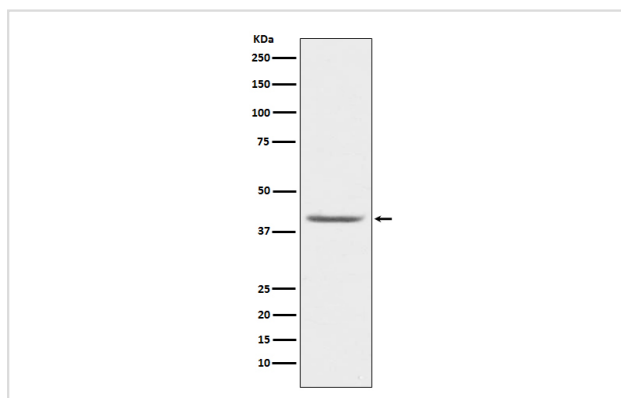
Description

Product Name	PON1 Rabbit mAb
Host Species	Rabbit
Clonality	Monoclonal
Isotype	Rabbit IgG
Purification	Affinity-chromatography
Applications	WB IP
Species Reactivity	Human Mouse Rat
Specificity	PON1 Antibody detects endogenous levels of total PON1
Immunogen Description	A synthesized peptide derived from human PON1
Other Names	A esterase 1; Aromatic esterase 1; Arylesterase 1; Arylesterase B type; ESA; Esterase A; K-45; MVCD5; Paraoxonase 1; Paraoxonase B type; PON; PON1; Serum aryldiacylphosphatase;
Accession No.	Uniprot:P27169
Calculated MW	40kDa
Formulation	Rabbit IgG in phosphate buffered saline , pH 7.4, 150mM NaCl, 0.02% sodium azide and 50% glycerol.
Storage	Store at +4°C short term. Store at -20°C long term. Avoid freeze / thaw cycle.

Application Details

WB:1:1000~1:5000IP:1:50

Images



Western blot analysis of PON1 expression in human plasma lysate.

Product Description

Hydrolyzes the toxic metabolites of a variety of organophosphorus insecticides. Capable of hydrolyzing a broad spectrum of organophosphate substrates and lactones, and a number of aromatic carboxylic acid esters. Mediates an enzymatic protection of low density lipoproteins against oxidative modification and the consequent series of events leading to atheroma formation.

Note: This product is for in vitro research use only and is not intended for use in humans or animals.