

## MBD1 Rabbit mAb

Catalog No: #56200

Package Size: #56200-1 50ul #56200-2 100ul

Orders: [order@signalwayantibody.com](mailto:order@signalwayantibody.com)Support: [tech@signalwayantibody.com](mailto:tech@signalwayantibody.com)

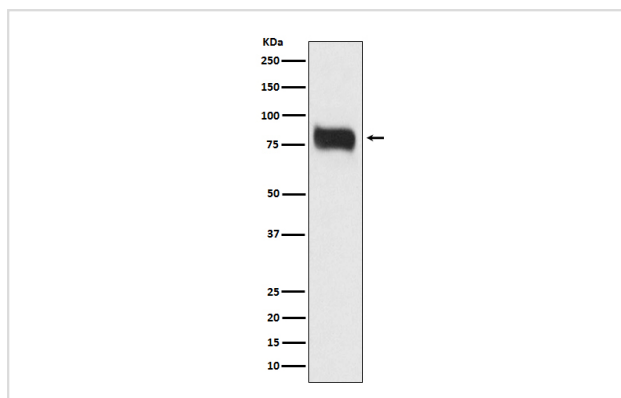
## Description

Product Name	MBD1 Rabbit mAb
Host Species	Rabbit
Clonality	Monoclonal
Isotype	Rabbit IgG
Purification	Affinity-chromatography
Applications	WB IHC ICC/IF IP
Species Reactivity	Human
Specificity	MBD1 Antibody detects endogenous levels of total MBD1
Immunogen Description	A synthesized peptide derived from human MBD1
Other Names	CXXC 3; Mbd1; MECP1 COMPLEX; PCM1; RFT;
Accession No.	Uniprot:Q9UIS9
Calculated MW	67kDa
Formulation	Rabbit IgG in phosphate buffered saline , pH 7.4, 150mM NaCl, 0.02% sodium azide and 50% glycerol.
Storage	Store at +4°C short term. Store at -20°C long term. Avoid freeze / thaw cycle.

## Application Details

WB:1:500~1:1000IHC:1:50~1:200ICC/IF:1:50~1:200IP:1:20

## Images



Western blot analysis of MBD1 expression in HeLa cell lysate.

## Product Description

Transcriptional repressor that binds CpG islands in promoters where the DNA is methylated at position 5 of cytosine within CpG dinucleotides. Binding is abolished by the presence of 7-mG that is produced by DNA damage by methylmethanesulfonate (MMS).

---

Note: This product is for in vitro research use only and is not intended for use in humans or animals.