

CEACAM6 Rabbit mAb

Catalog No: #56206

Package Size: #56206-1 50ul #56206-2 100ul

Orders: order@signalwayantibody.comSupport: tech@signalwayantibody.com

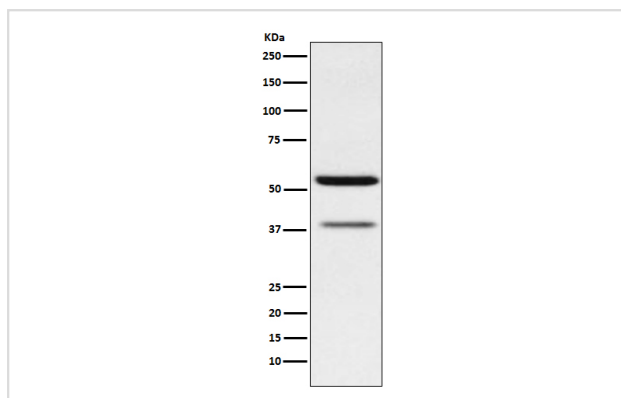
Description

Product Name	CEACAM6 Rabbit mAb
Host Species	Rabbit
Clonality	Monoclonal
Isotype	Rabbit IgG
Purification	Affinity-chromatography
Applications	WB IHC ICC IP
Species Reactivity	Human Mouse Rat
Specificity	CEACAM6 Antibody detects endogenous levels of total CEACAM6
Immunogen Description	A synthesized peptide derived from human CEACAM6
Other Names	CD66c; CEACAM6; CEAL; NCA; Non specific cross reacting antigen; Normal cross reacting antigen;
Accession No.	Uniprot:P40199
Calculated MW	37kDa
Formulation	Rabbit IgG in phosphate buffered saline , pH 7.4, 150mM NaCl, 0.02% sodium azide and 50% glycerol.
Storage	Store at +4°C short term. Store at -20°C long term. Avoid freeze / thaw cycle.

Application Details

WB:1:1000~1:5000IHC:1:50~1:200ICC/IF:1:50~1:200IP:1:50

Images



Western blot analysis of CEACAM6 expression in MCF7 cell lysate.

Product Description

Mediate homotypic and heterotypic intercellular adhesion events independently of cell type .

Note: This product is for in vitro research use only and is not intended for use in humans or animals.