

## Prothrombin Rabbit mAb

Catalog No: #56207



Package Size: #56207-1 50ul #56207-2 100ul

Orders: order@signalwayantibody.com

Support: tech@signalwayantibody.com

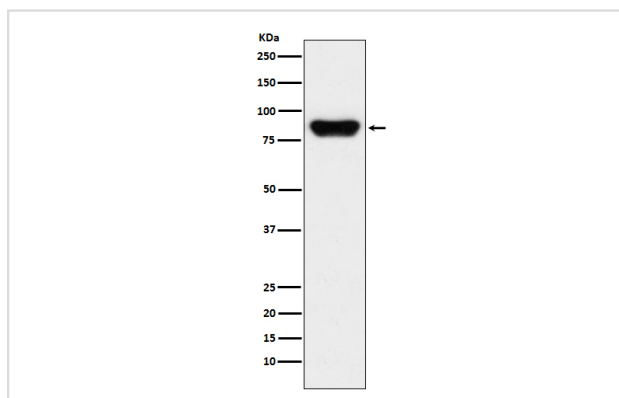
## Description

Product Name	Prothrombin Rabbit mAb
Host Species	Rabbit
Clonality	Monoclonal
Isotype	Rabbit IgG
Purification	Affinity-chromatography
Applications	WB IP
Species Reactivity	Human
Specificity	Prothrombin Antibody detects endogenous levels of total Prothrombin
Immunogen Description	A synthesized peptide derived from human Prothrombin
Other Names	Coagulation factor II; F2; Factor II; Prepro coagulation factor II; Prothrombin; prothrombin B-chain; PT; RPRGL2; serine protease; THPH1; Thrombin heavy chain;
Accession No.	Uniprot:P00734
Calculated MW	70kDa
Formulation	Rabbit IgG in phosphate buffered saline , pH 7.4, 150mM NaCl, 0.02% sodium azide and 50% glycerol.
Storage	Store at +4°C short term. Store at -20°C long term. Avoid freeze / thaw cycle.

## Application Details

WB: 1:500~1:2000 IP: 1:50

## Images



Western blot analysis of Prothrombin expression in human serum lysate.

## Product Description

Thrombin, which cleaves bonds after Arg and Lys, converts fibrinogen to fibrin and activates factors V, VII, VIII, XIII, and, in complex with thrombomodulin, protein C. Functions in blood homeostasis, inflammation and wound healing.

---

Note: This product is for in vitro research use only and is not intended for use in humans or animals.