

## SERPINC1 Rabbit mAb

Catalog No: #56210



Package Size: #56210-1 50ul #56210-2 100ul

Orders: order@signalwayantibody.com

Support: tech@signalwayantibody.com

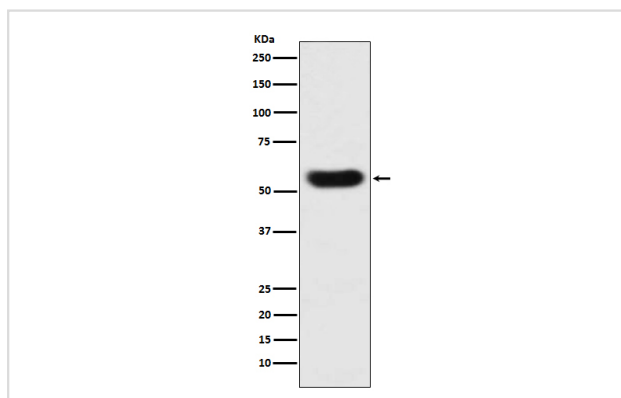
## Description

Product Name	SERPINC1 Rabbit mAb
Host Species	Rabbit
Clonality	Monoclonal
Isotype	Rabbit IgG
Purification	Affinity-chromatography
Applications	WB ICC/IF
Species Reactivity	Human
Specificity	SERPINC1 Antibody detects endogenous levels of total SERPINC1
Immunogen Description	A synthesized peptide derived from human SERPINC1
Other Names	Antithrombin; Antithrombin III; AT 3; AT III; AT3; AT3D; ATIII; Heparin cofactor I; Serpin C1; Serpin family C member 1; SERPINC1; THPH7;
Accession No.	Uniprot:P01008
Calculated MW	53kDa
Formulation	Rabbit IgG in phosphate buffered saline , pH 7.4, 150mM NaCl, 0.02% sodium azide and 50% glycerol.
Storage	Store at +4°C short term. Store at -20°C long term. Avoid freeze / thaw cycle.

## Application Details

WB:1:500~1:2000 ICC/IF:1:50~1:200

## Images



Western blot analysis of SERPINC1 expression in human plasma lysate.

## Product Description

Most important serine protease inhibitor in plasma that regulates the blood coagulation cascade. AT-III inhibits thrombin as well as factors IXa, Xa and XIa. Its inhibitory activity is greatly enhanced in the presence of heparin.

---

Note: This product is for in vitro research use only and is not intended for use in humans or animals.