

KLKB1 Rabbit mAb

Catalog No: #56215

Package Size: #56215-1 50ul #56215-2 100ul

Orders: order@signalwayantibody.com

Support: tech@signalwayantibody.com

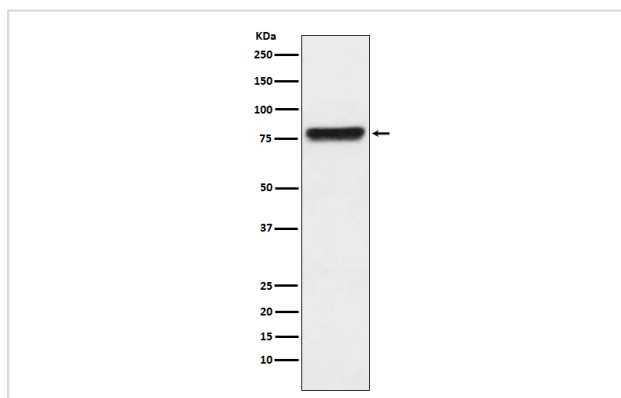
Description

| | |
|-----------------------|--|
| Product Name | KLKB1 Rabbit mAb |
| Host Species | Rabbit |
| Clonality | Monoclonal |
| Isotype | Rabbit IgG |
| Purification | Affinity-chromatography |
| Applications | WB IHC IP |
| Species Reactivity | Human Rat |
| Specificity | KLKB1 Antibody detects endogenous levels of total KLKB1 |
| Immunogen Description | A synthesized peptide derived from human KLKB1 |
| Other Names | Fletcher factor; kallikrein B plasma; Kallikrein B1; Kininogenin; KLK3; KLKB1; PKK; PKKD; Plasma kallikrein light chain; PPK; Prekallikrein; |
| Accession No. | Uniprot:P03952 |
| Calculated MW | 80kDa |
| Formulation | Rabbit IgG in phosphate buffered saline , pH 7.4, 150mM NaCl, 0.02% sodium azide and 50% glycerol. |
| Storage | Store at +4°C short term. Store at -20°C long term. Avoid freeze / thaw cycle. |

Application Details

WB:1:500~1:2000IHC:1:50~1:200IP:1:50

Images



Western blot analysis of KLKB1 expression in human plasma lysate.

Product Description

The enzyme cleaves Lys-Arg and Arg-Ser bonds. It activates, in a reciprocal reaction, factor XII after its binding to a negatively charged surface. It also releases bradykinin from HMW kininogen and may also play a role in the renin-angiotensin system by converting prorenin into renin.

Note: This product is for in vitro research use only and is not intended for use in humans or animals.