

## KIF3A Rabbit mAb

Catalog No: #56218

Package Size: #56218-1 50ul #56218-2 100ul

Orders: [order@signalwayantibody.com](mailto:order@signalwayantibody.com)Support: [tech@signalwayantibody.com](mailto:tech@signalwayantibody.com)

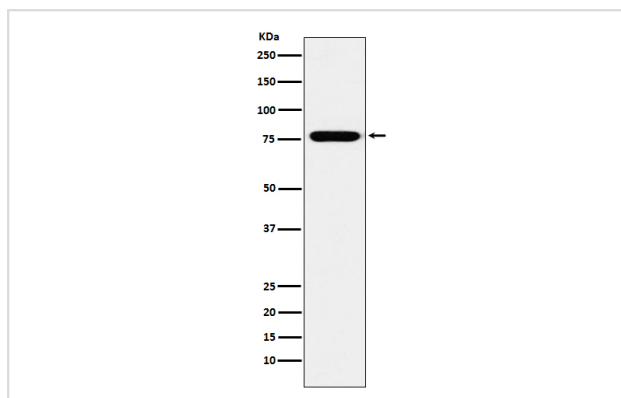
## Description

Product Name	KIF3A Rabbit mAb
Host Species	Rabbit
Clonality	Monoclonal
Isotype	Rabbit IgG
Purification	Affinity-chromatography
Applications	WB IP
Species Reactivity	Human Mouse Rat
Specificity	KIF3A Antibody detects endogenous levels of total KIF3A
Immunogen Description	A synthesized peptide derived from human KIF3A
Other Names	KIF 3; KIF 3A; Kifl; Kinesin family member 3A; Kinesin like protein KIF 3A; Kinesin-like protein KIF3A; Kns3;
Accession No.	Uniprot:Q9Y496
Calculated MW	80kDa
Formulation	Rabbit IgG in phosphate buffered saline , pH 7.4, 150mM NaCl, 0.02% sodium azide and 50% glycerol.
Storage	Store at +4°C short term. Store at -20°C long term. Avoid freeze / thaw cycle.

## Application Details

WB:1:500~1:2000IP:1:50

## Images



Western blot analysis of KIF3A expression in SH-SY5Y cell lysate.

## Product Description

Microtubule-based anterograde translocator for membranous organelles. Plus end-directed microtubule sliding activity in vitro.

---

Note: This product is for in vitro research use only and is not intended for use in humans or animals.