

DDR2 Rabbit mAb

Catalog No: #56221

Package Size: #56221-1 50ul #56221-2 100ul

Orders: order@signalwayantibody.comSupport: tech@signalwayantibody.com

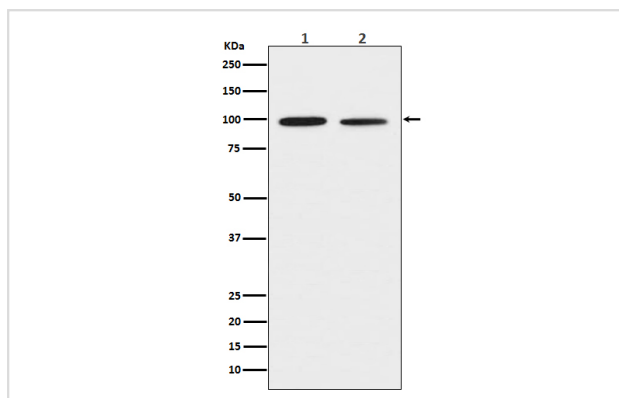
Description

Product Name	DDR2 Rabbit mAb
Host Species	Rabbit
Clonality	Monoclonal
Isotype	Rabbit IgG
Purification	Affinity-chromatography
Applications	WB
Species Reactivity	Human Mouse Rat
Specificity	DDR2 Antibody detects endogenous levels of total DDR2
Immunogen Description	A synthesized peptide derived from human DDR2
Other Names	CD167b; NTRKR3; Receptor related 3; TKT;
Accession No.	Uniprot:Q16832
Calculated MW	97kDa
Formulation	Rabbit IgG in phosphate buffered saline , pH 7.4, 150mM NaCl, 0.02% sodium azide and 50% glycerol.
Storage	Store at +4°C short term. Store at -20°C long term. Avoid freeze / thaw cycle.

Application Details

WB: 1:500~1:2000

Images



Western blot analysis of DDR2 expression in (1) Jurkat cell lysate; (2) NIH/3T3 cell lysate.

Product Description

This tyrosine kinase receptor for fibrillar collagen mediates fibroblast migration and proliferation. Contributes to cutaneous wound healing.

Note: This product is for in vitro research use only and is not intended for use in humans or animals.