

Caspr Rabbit mAb

Catalog No: #56228



Package Size: #56228-1 50ul #56228-2 100ul

Orders: order@signalwayantibody.com

Support: tech@signalwayantibody.com

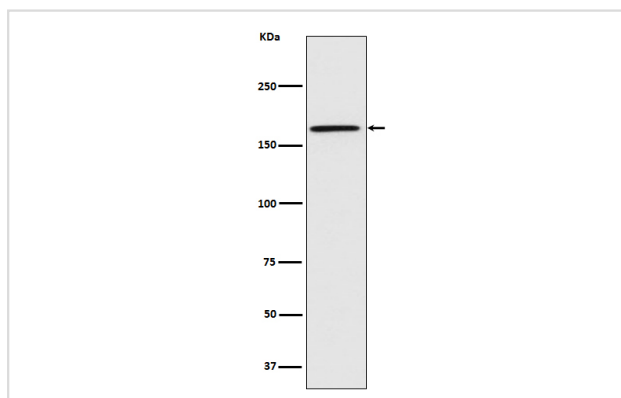
Description

Product Name	Caspr Rabbit mAb
Host Species	Rabbit
Clonality	Monoclonal
Isotype	Rabbit IgG
Purification	Affinity-chromatography
Applications	WB IHC
Species Reactivity	Human Mouse Rat
Specificity	Caspr Antibody detects endogenous levels of total Caspr
Immunogen Description	A synthesized peptide derived from human Caspr
Other Names	Caspr; Caspr1; CNTNAP; Cntnap1; Contactin associated protein 1; MHDNIV; NCP1; Neurexin-4; Nrnx4; p190; Paranodin;
Accession No.	Uniprot:P78357
Calculated MW	165kDa
Formulation	Rabbit IgG in phosphate buffered saline , pH 7.4, 150mM NaCl, 0.02% sodium azide and 50% glycerol.
Storage	Store at +4°C short term. Store at -20°C long term. Avoid freeze / thaw cycle.

Application Details

WB: 1:500~1:2000 IHC: 1:50~1:200

Images



Western blot analysis of Caspr expression in U87-MG cell lysate.

Product Description

Contactin-associated protein 2 (Caspr2) is a type I transmembrane protein and member of the neurexin superfamily that mediates nervous system cell-cell interactions through the Neurexin IV-Caspr-Paranodin (NCP) complex.

Note: This product is for in vitro research use only and is not intended for use in humans or animals.