

BCHE Rabbit mAb

Catalog No: #56231

Package Size: #56231-1 50ul #56231-2 100ul

Orders: order@signalwayantibody.comSupport: tech@signalwayantibody.com

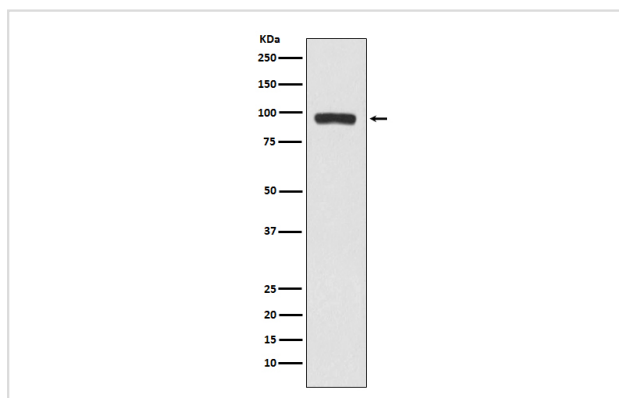
Description

Product Name	BCHE Rabbit mAb
Host Species	Rabbit
Clonality	Monoclonal
Isotype	Rabbit IgG
Purification	Affinity-chromatography
Applications	WB
Species Reactivity	Human
Specificity	BCHE Antibody detects endogenous levels of total BCHE
Immunogen Description	A synthesized peptide derived from human BCHE
Other Names	BCHE; Butyrylcholine esterase; CHE1; CHE2; Choline esterase II; Cholinesterase (serum) 2; Cholinesterase 1; Cholinesterase; E1;
Accession No.	Uniprot:P06276
Calculated MW	90kDa
Formulation	Rabbit IgG in phosphate buffered saline , pH 7.4, 150mM NaCl, 0.02% sodium azide and 50% glycerol.
Storage	Store at +4°C short term. Store at -20°C long term. Avoid freeze / thaw cycle.

Application Details

WB: 1:500~1:2000

Images



Western blot analysis of BCHE expression in A375 cell lysate.

Product Description

Esterase with broad substrate specificity. Contributes to the inactivation of the neurotransmitter acetylcholine. Can degrade neurotoxic organophosphate esters.

Note: This product is for in vitro research use only and is not intended for use in humans or animals.