

MSR1 Rabbit mAb

Catalog No: #56234

Package Size: #56234-1 50ul #56234-2 100ul

Orders: order@signalwayantibody.comSupport: tech@signalwayantibody.com

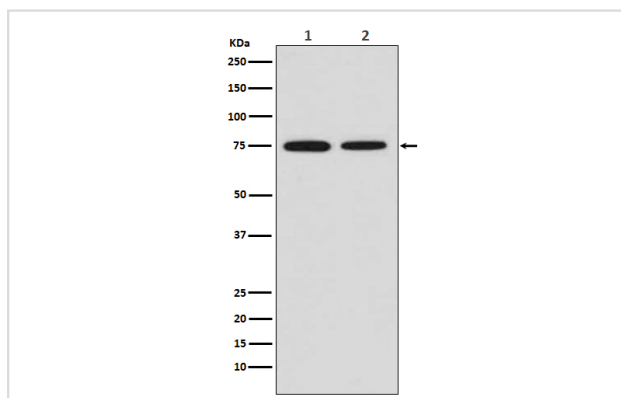
Description

Product Name	MSR1 Rabbit mAb
Host Species	Rabbit
Clonality	Monoclonal
Isotype	Rabbit IgG
Purification	Affinity-chromatography
Applications	WB
Species Reactivity	Human Mouse Rat
Specificity	MSR1 Antibody detects endogenous levels of total MSR1
Immunogen Description	A synthesized peptide derived from human MSR1
Other Names	Macrophage scavenger receptor types I and II; Macrophage acetylated LDL receptor I and II; Scavenger receptor class A member 1; CD204; MSR1; SCARA1;
Accession No.	Uniprot:P21757
Calculated MW	75kDa
Formulation	Rabbit IgG in phosphate buffered saline , pH 7.4, 150mM NaCl, 0.02% sodium azide and 50% glycerol.
Storage	Store at +4°C short term. Store at -20°C long term. Avoid freeze / thaw cycle.

Application Details

WB: 1:500~1:2000

Images



Western blot analysis of MSR1 expression in (1) HeLa cell lysate; (2) Mouse placenta lysate.

Product Description

Membrane glycoproteins implicated in the pathologic deposition of cholesterol in arterial walls during atherogenesis. Two types of receptor subunits exist. These receptors mediate the endocytosis of a diverse group of macromolecules, including modified low density lipoproteins (LDL). Isoform III does not internalize acetylated LDL.

Note: This product is for in vitro research use only and is not intended for use in humans or animals.